

## APP



Google Play and the Google Play logo are trademarks of Google Inc.

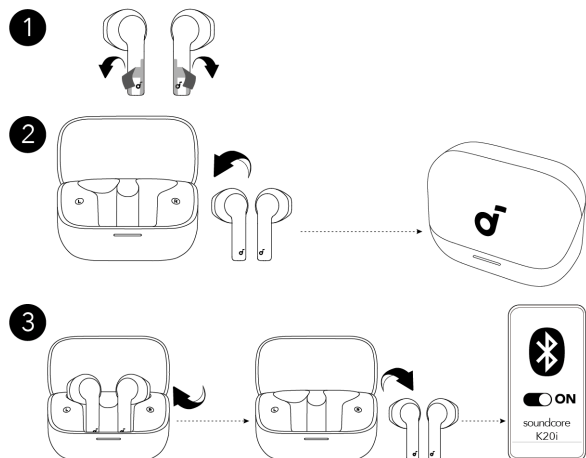


Apple and the Apple logo are trademarks of Apple Inc.



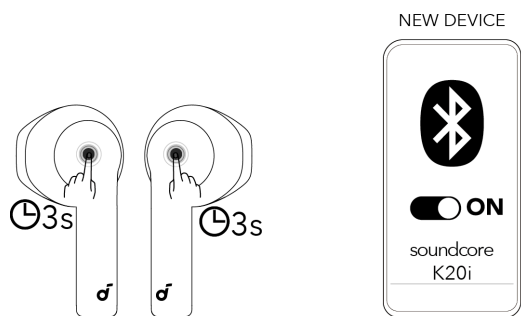
Download the soundcore app to experience, Find Earbuds, 22 pre-set EQ settings, gaming mode, firmware update and more exciting features. If your earbuds cannot connect with the soundcore app, re-install the app or update it to the latest version in your mobile app store. Click this link to download: <http://dl-soundcore.soundcore.com/qcdl?flow=soundcore>

## POWERING ON & PAIRING



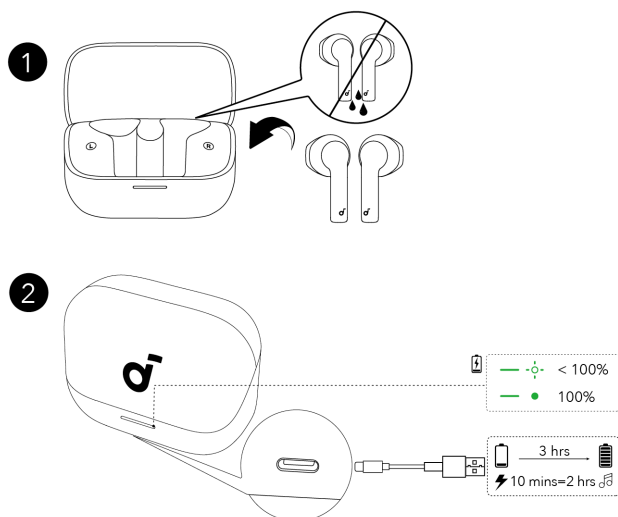
1. Peel off the protective film on the earbuds.
  2. Return the earbuds to the charging case and close the case.
  3. Reopen the charging case and take out the earbuds. The earbuds will automatically power on and enter pairing mode. Select **"soundcore K20i"** from your device's Bluetooth list.
- When taken out, the earbuds will automatically power off after 30 minutes if they are not connected. The duration can be set in the soundcore app.

## MANUAL PAIRING



To pair with a new device, when the earbuds are out of the case, press and hold the touch areas of both earbuds simultaneously for 3 seconds to enter pairing mode.

## CHARGING



1. Place the earbuds in the charging case and close it.

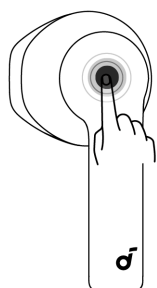
• Fully dry off the earbuds and the USB-C charging port before charging.

2. Connect the charging case to a power supply by using the provided USB-C charging cable.

• A full battery recharge takes about 3 hours and 10 minutes of charging offers 2 hours of playtime.

## CONTROLS

### TWS



### MONO

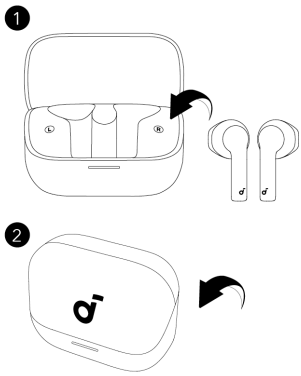


x2: Double tap 2s: Tap and hold for 2 seconds

\*You can also customize controls in the soundcore app.

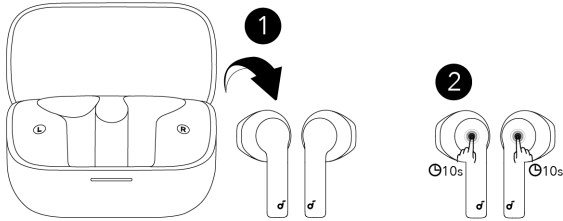
		TWS mode	Mono mode
	Play / Pause	Double tap (R)	Double tap
	Next track	Double tap (L)	/
	Answer a call	Double tap (L/R)	Double tap
	Reject / end a call	Tap and hold for 2 seconds (L/R)	Tap and hold for 2 seconds

## POWERING OFF



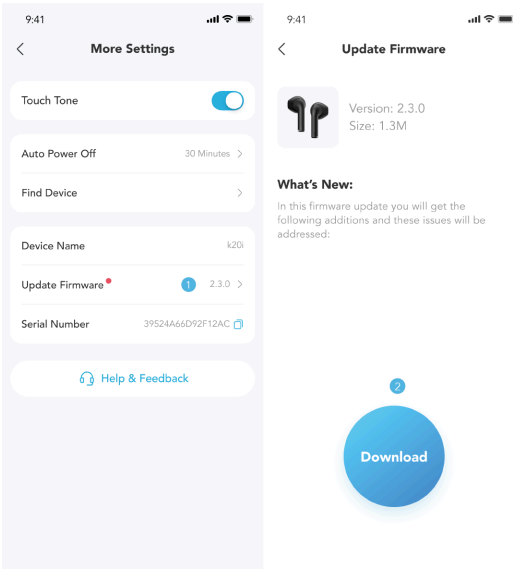
To power off, return the earbuds to the charging case and close it.

### RESET



You might need to reset your earbuds if you experience connectivity or function issues.  
Open the charging case and take out the earbuds. Within 60 seconds, press and hold the touch areas of both earbuds simultaneously for 10 seconds to reset.

### Firmware Update



You will be informed once a new firmware version is detected when you connect the earbuds to the app. Ensure the earbuds are out of the charging case until the firmware update is complete. During the update, avoid any usage.

### SPECS

Specifications are subject to change without notice.

Input	5V⎓ 0.5A
Output	5V⎓ 0.2A
Battery capacity	43mAh*2 (earbuds) +700mAh (charging case)
Playtime	6 hours / 36 hours
Charging time	Full charging time (charging case) for earbuds: 1 hour Full charging time (type-C cable) for charging case: 3 hours
Driver unit	13mm driver
Frequency response	20-20KHz
Impedance	16Ω
Waterproof rating (earbuds)	IPX5
Bluetooth version	5.3
Bluetooth range	10m

### Regulations and Compliance Information

Hereby, Anker Innovations Limited declares that this device is in compliance with The Product Security and Telecommunications Infrastructure (Security Requirements for Relevant Connectable Products) Regulations 2023. For the Statement of Compliance, visit the website:  
<https://uk.soundcore.com/pages/psti-related>.

Note: The 'x' of SN Code: xxxxxxxxxxxxxxxx is a variable, see below table.

Variable 'x'	Range of variable	Content
Seventh	0-9 or A-F	Denotes the hardware version which is not effected on the safety compliance.
Eighth	8,9,A,B,C...	Denotes the year, 8 means 2018, 9 means 2019, A means 2020, B means 2021, C means 2022, and so on.
Ninth and tenth	01,02,03...	Denotes weeks, 01 means the first week in this year, 02 means the secondary week in this year, and so on.
Eleventh	1-7	Denotes date, 1 means Monday, 2 means Tuesday..., 7 means Sunday and so on.
The last five	00001-99999	Denotes serial No.