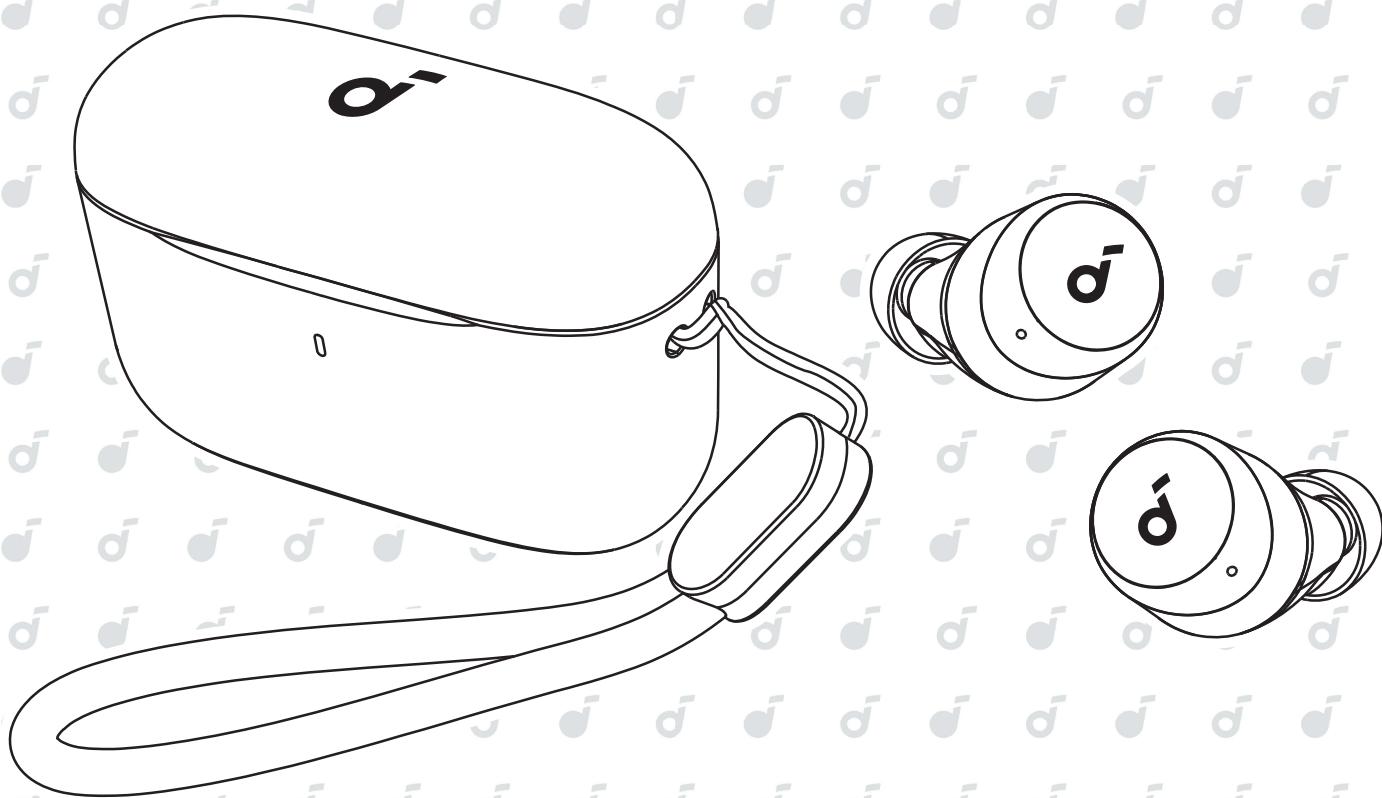


soundcore



soundcore A20i/A25i

USER MANUAL



APP



soundcore



Google Play and the Google Play logo are trademarks of Google Inc.



Apple and the Apple logo are trademarks of Apple Inc.



Download the soundcore app to enhance your experience (Gaming mode, Find device, EQ tuning, Firmware update, and more). If your earbuds cannot connect with the soundcore app, update it to the latest version in your mobile app store.



WEARING

1



S

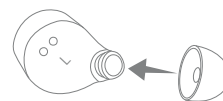


M



L

2

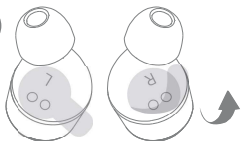


Choose the ear tips that fit your ears best.

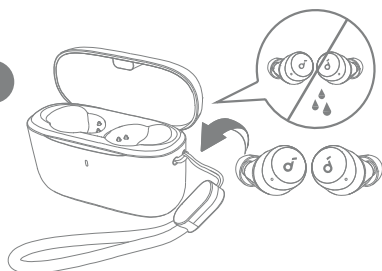


CHARGING

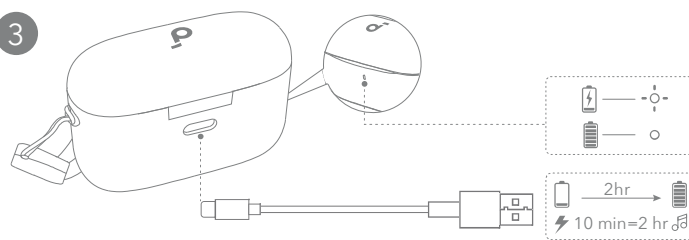
1



2



3



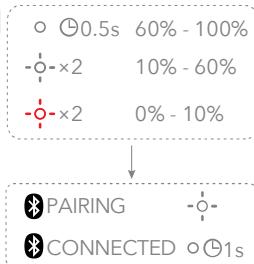
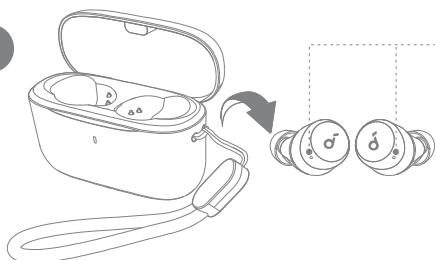
1. Tear off the insulation sticker on the earbuds before first use.
2. Place the earbuds in the charging case and close it.
 - Fully dry off the earbuds and the USB-C charging port before charging.

3. Connect the charging case to a power supply by using a certified USB-C charging cable.
 - Fully charge both the earbuds and the charging case before first use.

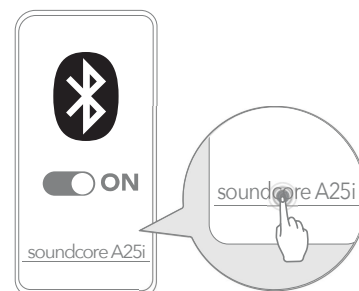


POWERING ON & PAIRING

1



2



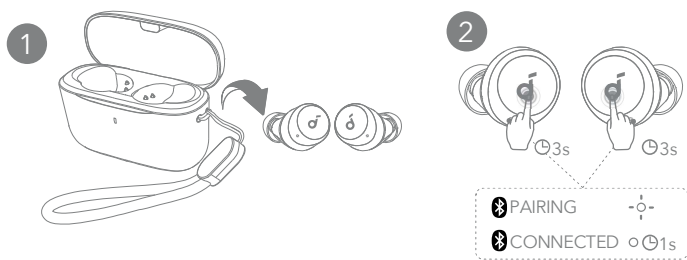
Open the charging case and take the earbuds out. They will automatically power on and enter Bluetooth pairing mode.

Select "**soundcore A20i / A25i**" * on your device's Bluetooth list when connecting for the first time.

*The device name may vary depending on the region.



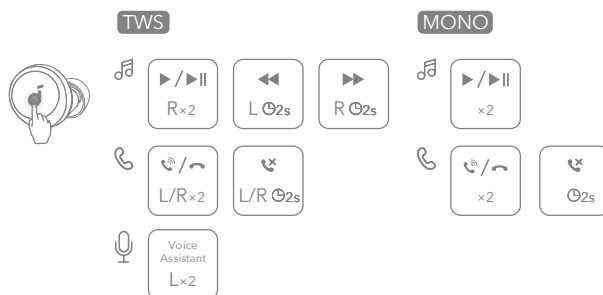
MANUAL PAIRING



To manually enter Bluetooth pairing mode, take the earbuds out of the case, then tap and hold the touchpads on both earbuds for 3 seconds until the earbuds' LED indicators flash white rapidly.



CONTROLS



You can also customize controls in the soundcore app.

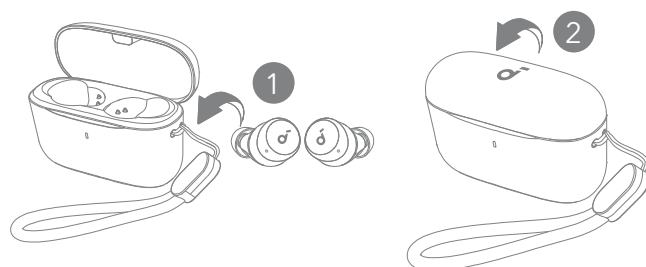


CONTROLS

		TWS mode	Mono mode
	Play / Pause	Tap twice (R)	Tap twice
	Previous track	Tap and hold for 2 seconds (L)	/
	Next track	Tap and hold for 2 seconds (R)	/
	Answer / End a call	Tap twice (L/R)	Tap twice
	Reject a call	Tap and hold for 2 seconds (L/R)	Tap and hold for 2 seconds
	Activate voice assistant software	Tap twice (L)	/



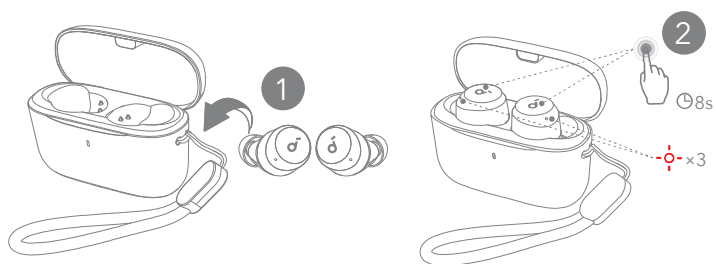
POWERING OFF



To power off, return the earbuds to the charging case and close it. The earbuds will automatically power off after 30 minutes if they are not connected.



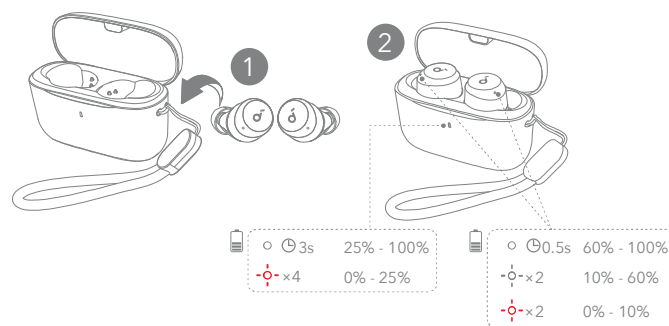
RESET



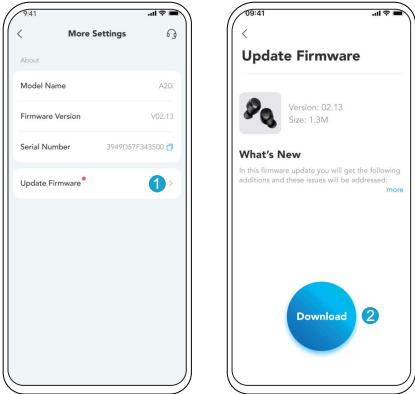
Reset if the earbuds have issues pairing with each other or with other devices. Place the earbuds in the charging case and leave the case open, then tap and hold the touchpads on both earbuds for 8 seconds until the earbuds' LED indicators flash red rapidly three times.



LED LIGHT GUIDE



- Steady white
- Flashing white
- Flashing red



You will be notified once a new firmware version is detected when you connect the earbuds to the app. Ensure the earbuds are placed in the charging case and the case remains open until the firmware update is complete. During the update, make sure the earbuds are being charged and avoid any usage.

Specifications are subject to change without notice.

Input	5V --- 0.5A
Rated output power	5mW
Battery capacity	60mAh × 2 (earbuds); 350Ah (charging case)
Charging time	Up to 2 hours
Playtime (varies by volume level and content)	Up to 9 hours (up to 28 hours with the charging case)
Driver unit	6mm dynamic driver
Frequency response	20Hz - 20kHz
Impedance	16Ω
Waterproof level (earbuds)	IPX5
Bluetooth version	5.3
Bluetooth range	10m / 33ft