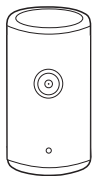


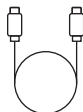
What's Included



1



2



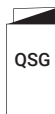
3



4



5



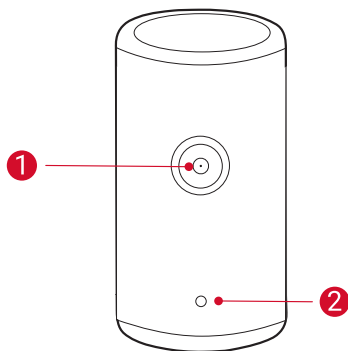
6

- 1 Nebula Capsule 3 Laser GTV
- 2 Adapter
- 3 Charging Cable
- 4 Remote Control
- 5 AAA Battery × 2
- 6 Quick Start Guide

At a Glance

1. Projector

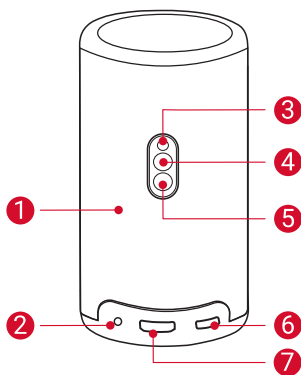
Front View



1 Lens

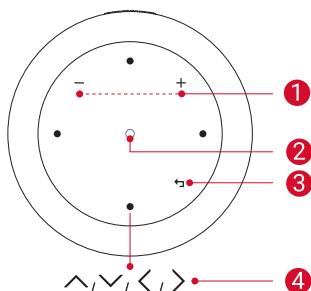
2 Camera (for autofocus and auto keystone correction)

Rear View



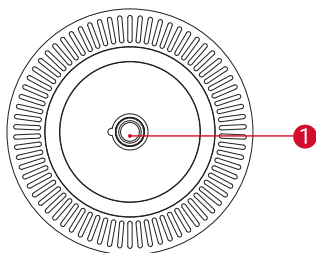
- 1** Speaker
- 2** AUX-OUT Socket
 - Connect to an external sound output device.
- 3** Infrared Receiver
- 4** Mode Button
 - Press to switch between Bluetooth speaker mode and projector mode.
- 5** Power Button
 - Press and hold for 1.5 seconds to power on / off.
 - Press to wake up the projector / enter standby mode in projector mode.
- 6** USB-C Port
 - Connect to the power supply with the provided adapter and charging cable.
 - Connect to a USB drive.
- 7** HDMI port
 - Connect to a playback device via HDMI output.

Top View



- ① Volume Up / Down Buttons
- ② Confirmation Button
- ③ Return Button
- ④ Navigation Buttons

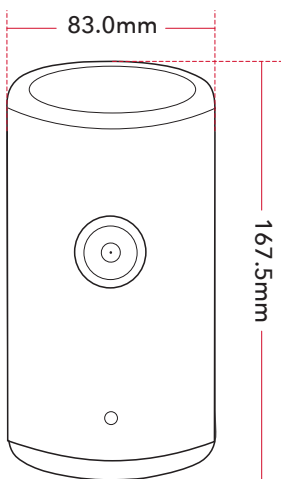
Bottom View



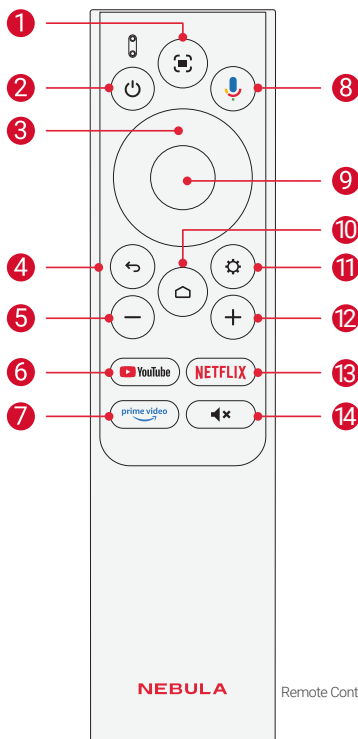
- ① 1/4" Tripod Socket

Dimensions

167.5 (H) x 83.0 (D) mm / 6.6 (H) x 3.3 (D) in





2. Remote Control



- | | |
|---|--|
| 1 Auto image adjustment | 8 Activate the Google Assistant |
| 2 Power on / off / switch to standby mode | 9 Confirm a selection / pause / resume |
| 3 Navigation | 10 Access the home menu |
| 4 Return button | 11 Access more options |
| 5 Volume down | 12 Volume up |
| 6 Open Youtube | 13 Open Netflix |
| 7 Open Prime Video | 14 Press to mute or unmute the sound |

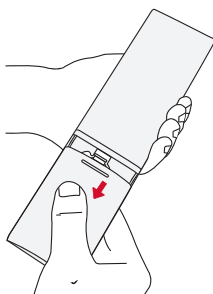
3. LED Light Guide

Button	LED Status	Description
	Steady blue	Powered on
	Light off	Powered off
	Steady orange	Standby mode
	Steady green	Fully charged
	Flashing red	Low battery
	Flashing blue	Ready to pair / Bluetooth pairing / Bluetooth disconnected (Bluetooth speaker mode)
	Steady blue	Bluetooth connected (Bluetooth speaker mode)

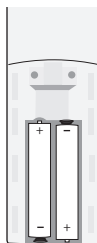
Getting Started

1. Prepare the Remote

- ① Slide to open the battery compartment.
- ② Insert new batteries matching the polarity (+/-) and close the battery compartment.
- ③ For first-time use, follow the on-screen instructions to pair the remote with your projector.



①



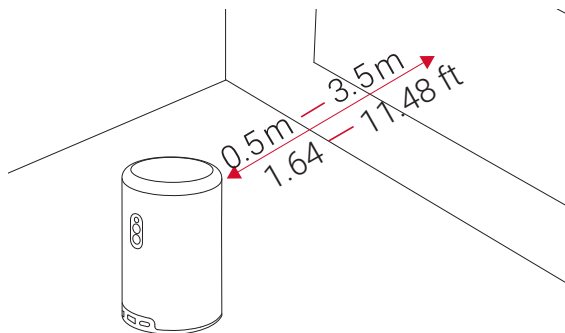
②



The distance between the remote and the projector should not exceed 20 m / 65 ft.

2. Position Your Projector

Place the projector on a stable, flat surface in front of the projection surface. For the best results, the projection surface should be white and flat.

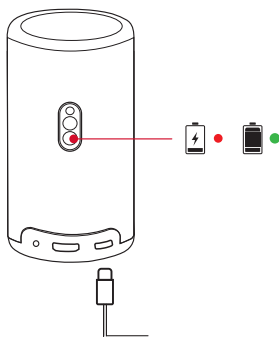


- It is unnecessary to tilt the projector towards the projection surface. You can correct the projection image with the built-in autofocus and auto-keystone correction.
- You may also install the projector onto a tripod (sold separately).
- The distance between the projector and the projection surface determines the projection image size. For the best result, position the projector 1.06~3.18 m / 3.37~10.43 ft away from the projection surface to get a screen size of 40~120 inches.

Screen Size	Distance Between Projector Lens and Screen
40 inches	1.06 m / 3.47 ft
50 inches	1.33 m / 4.36 ft
60 inches	1.60 m / 5.24 ft
70 inches	1.86 m / 6.10 ft
80 inches	2.13 m / 6.98 ft
90 inches	2.39 m / 7.84 ft
100 inches	2.65 m / 8.69 ft
110 inches	2.92 m / 9.58 ft
120 inches	3.18 m / 10.43 ft

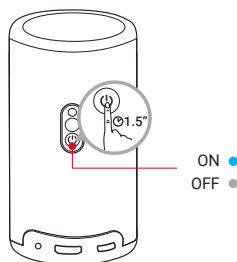
3. Charge Your Projector

For first-time use, fully charge your projector using the provided adapter and charging cable.



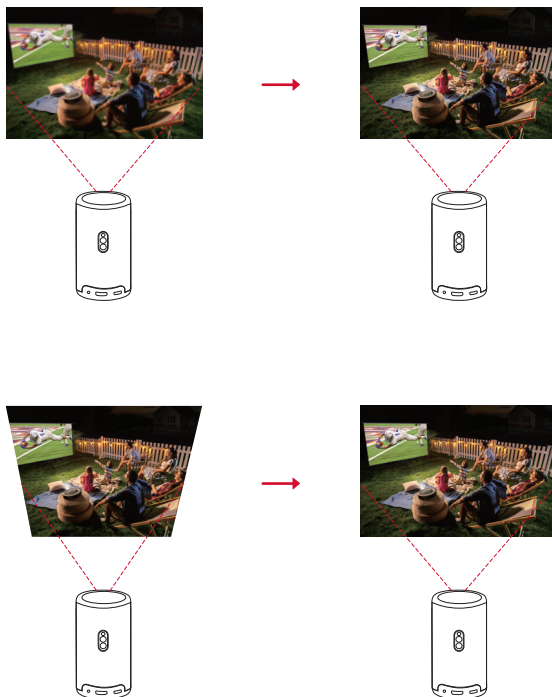
4. Power On / Off


Press and hold the projector power button for 1.5 seconds to power on / off.



- You can also press and hold the power button on the remote for 1.5 seconds to power off.
- When powered on, press the power button on the projector or remote to switch to standby mode.
- In HDMI Source Mode, the projector will switch to standby mode after 10 minutes of button inactivity or when no signal is detected.
- When standby mode lasts for 30 minutes and the projector is not connected to power supply, the projector will automatically power off.

5. Autofocus and Auto Keystone Correction



To enable autofocus and auto keystone correction, slightly move the projector or press the  on the remote.

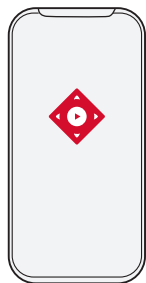
6. Setup

When using the projector for the first time, follow the on-screen display (OSD) instructions to complete the basic setup.

- Pair the remote with your projector
- Select your language
- Set up your TV with your Android phone (optional)
- Connect to Wi-Fi
- Sign in with your Google account

Nebula Connect App

To easily control the projector, we recommend you download the Nebula Connect app.





- ① Download the **Nebula Connect** app from the App Store (iOS devices) or Google Play (Android devices).
- ② Enable Bluetooth on your smartphone.
- ③ Open the Nebula Connect app and select **[Capsule 3 Laser]** as the device to be connected.
- ④ Follow the on-screen instructions to complete connection setup.

Settings

Go through the setup process when you power on the projector for the first time.

1. Network

This projector can be connected to the Internet via a wireless (Wi-Fi) connection.

- ① On the home page, select  > **[Network & Internet]** and press .
- ② Follow the on-screen instructions to complete the network connection.

2. Projector

On the home page, select  > **[Projector]** and press .

[Image Correction]	<p>Auto Keystone Correction Settings</p> <p>[Auto Keystone Correction By Remote]: Enable or disable auto keystone correction by remote.</p> <p>[Auto Keystone Correction At Startup]: Automatically perform keystone correction when the projector powers on.</p> <p>[Auto Keystone Correction After Movement]: Automatically perform keystone correction when you move the projector.</p> <p>[Manual Keystone Correction]: Enable manual keystone correction. It is only available when auto keystone correction is off.</p> <p>[Auto Screen Fit]: Enable or disable auto screen fit.</p> <p>[Auto Obstacle Avoidance]: Enable or disable auto obstacle avoidance.</p> <p>[Perform Manual Keystone Correction Access]: Manually perform keystone correction by adjusting each corner.</p> <p>[One-click Image Correction]: Automatically adjust the image size to your surface.</p> <p>[Zoom]: Zoom in or out of the projection image from 50% to 100%.</p>
[Focus Settings]	<p>[Auto Focus at Startup]: Automatically adjust the focus when the projector powers on.</p> <p>[Auto Focus After Movement]: Automatically adjust the focus when you move the projector.</p> <p>[Manual Focus Correction]: Enable manual focus correction.</p>

[Advanced Settings]	<p>[Projection Mode]: Select a way of placing the projector.</p> <ul style="list-style-type: none">• [Auto]: Automatically detects whether the projector is inverted. Automatically switch between these options.• [Front]: The device is located in front of the projection surface.• [Front Ceiling]: The device is hanging from the ceiling in an upside-down position. The image is rotated by 180 degrees.• [Rear]: The device is located behind the projection surface.• [Rear Ceiling]: The device is hanging from the ceiling in an upside-down position behind the projection surface. The image is rotated by 180 degrees and horizontally mirrored.
	<p>[Motion Settings]: Set a sensitivity level for the G-sensor to trigger autofocus and auto keystone correction.</p>
	<p>[Keystone Calibration]: Recalibrate the projector if keystone correction doesn't work properly.</p>
	<ul style="list-style-type: none">• [Smart Solutions]: Receive alerts when issues are detected.• [Projection Angle Alert]: Receive alerts when issues are detected.• [Fine Tuning Popup]: Receive a popup after Auto Gridless Keystone Correction.• [Nebula Smart Popup]: Receive prompts when the projector status changes.

[Display & Sound]	<p>Picture</p> <p>[Brightness]: Adjust brightness based on your environment.</p> <p>[Standard]: Keeps natural looking colors with a balance of warm and cool tones.</p> <p>[Eco]: Reduce brightness to save power.</p> <p>[Auto]: Maximum brightness when connected to power; switch to Eco Mode when power is disconnected.</p>
	<ul style="list-style-type: none"> • [Picture Mode]: The projector is preset with several predefined picture modes so that you can choose one to suit your environment and input source. • [Standard]: Keeps natural looking colors with a balance of warm and cool tones. • [Vivid]: Provides bold colors for streaming content. • [Sport]: Provides a faster response time for sports scenes. • [Movie]: Provides the best colors for watching movies. • [Game]: Increases the brightness and response time level for playing video games. • [Conference]: Increases the brightness but affects the color reproduction.

[Advanced Settings]: Customize advanced settings to enhance image quality.

- **[Color Temperature]:** Switch between different color temperatures.
- **[Red Gain]:** Manually set the value of red gain.
- **[Green Gain]:** Manually set the value of green gain.
- **[Blue Gain]:** Manually set the value of blue gain.
- **[DNR]:** Reduces digital noise on screen.
- **[MPEG NR]:** Eliminates image noise when playing an MPEG-compressed video.
- **[DI Film Mode]:** Creates high-definition images encoded at 24 frames/second.
- **[Wall Color]:** Manually adapt the screen to different wall colors.
- **[Gamma]:** Select different Gamma options (Dark, Medium, Bright)
- **[Color Space]:** Select appropriate color space.
- **[Color Tuner]:** Manually tune the color.
- **[MEMC]:** Inserts additional frame between original frames for smooth motions.
- **[11 Point White Balance Correction]:** Manually adjust the white balance.

Sound

[Movie]: Creates a surround-sound listening experience for watching movies.

[Music]: Enhances the treble for listening to music.

[Outdoors]: Increases volume for playing audio / video outdoors.

[Custom]: Manually set audio settings such as balance, bass, and treble.

[Turn on the Bluetooth Speaker Mode]: Enable to use the projector as a Bluetooth speaker.

[Speaker Delay]: To synchronize the sound with the image, adjust the sound delay by 10 milliseconds for each operation.

[Expert Settings]: Customize advanced settings to enhance audio quality.

- eARC: Supports the connection of external devices such as sound systems for audio return capabilities.

Audio Output

[Auto]: Automatically select the best audio output mode.

[Bypass]: Pass the digital audio signal through without processing it, allowing the connected device to decode the audio.



[PCM]: Output audio in PCM format.

[Dolby Digital Plus]: Output audio in the Dolby Digital Plus format.

[Dolby Digital]: Output audio in the Dolby Digital format.

[Digital Output Delay]: Adjust the delay of the digital audio output to synchronize the sound with the video.

3. Apps

- ① On the home page, select  > **[Apps]**, and press .
- ② Select an app to check its current version, open or force stop it, review the storage it uses, clear its data or cache, uninstall it, or enable/disable its notifications and permissions.

4. System

On the home page, select  > **System** and press .

Accessibility: Change the caption settings or enable accessibility service.

[Accessibility]	Change the caption settings or enable accessibility service.
[About]	Check the product information, update the system, reset the device, or rename the device.
[Date & Time]	Enable or disable automatic date and time. Manually set date and time, select time zone, or set time format.
[Language]	Select an on-screen display language.
[Keyboard]	Check and manage keyboards.
[Storage]	Check the device storage.
[Ambient Mode]	Set your preferences to diaplay photos, weather, and time on your Google TV.
[Power & Energy]	Change the auto-sleep settings, turn off the current display, or set auto power-off time when no signal is available.
[Cast]	Choose to show notifications on all Android devices connected to your Wi-Fi and let them control media casting to this device.
[System Sounds]	Turn on/off system sound notifications.

[Restart]	Restart the system.
------------------	---------------------

5. Others


On the home page, select  to find more setting options.

[Accounts & Sign-in]	Sign in to make the most of Google TV.
[Privacy]	Customize your privacy preferences.
[Remotes & Accessories]	Search for accessories for pairing.
[Help & Feedback]	Leave your feedback on the projector or share any other ideas.

Using Your Projector

1. Select an App

Once connected to a wireless network, you can access online services, enjoy movies, music and pictures, and browse online. You can download more apps from Google Play.

- ① Press  to access the home page.
- ② Select **[Apps] > [Search for apps and games]**.

2. Voice Assistant

After setup, press the Google Assistant button on the remote, you can speak to the Google Assistant and request your commands.

3. Wireless Casting


You can wirelessly cast movies, games, music, and entire screen from your iOS, macOS, Android, or Windows device to Nebula Capsule 3 Laser.

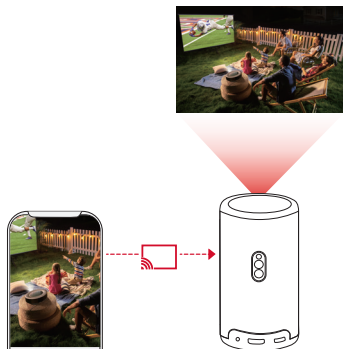


Make sure Nebula Capsule 3 Laser and your device are connected to the same wireless network. The network can be a WiFi network or your phone's hotspot.

3.1 Cast In-App Content

You can cast content from apps that support Chromecast, such as YouTube and Prime Video.

- ① Connect your device and projector to the same wireless network.
- ② Open the streaming app on your device.
- ③ Play a video clip and tap the cast icon  on the video screen.
- ④ Select **Capsule 3 Laser** to connect. The projector will mirror the video screen on your device.




Certain content cannot be cast on Nebula Capsule 3 Laser due to copyright restrictions. You can stream the content via the same app installed on your projector.


3.2 Cast Device Screen

You can cast the entire screen from your device to the projector. Before that, please ensure Nebula Capsule 3 Laser and your device are connected to the same wireless network.


- **For iOS devices:**

1. Access the Control Center of your device and click .
2. Click on "**Nebula Capsule 3 Laser**" in the device list. For Android devices:

- **For Android devices:**

1. Enter Google Home APP and select "**Nebula Capsule 3 Laser**".
2. Tap  on the page.

- **Streaming Services:**

1. Enter streaming service APP and tap the Airplay icon or .
2. Click on the name of your NEBULA device in the device list:
"**Nebula Capsule 3 Laser**".


- **With Nebula Cast APP:**

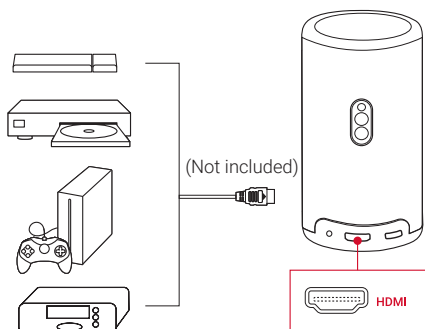
1. Connect your device and projector to the same wireless network.

2. Install the Nebula Cast app on your projector.
3. Open Nebula Cast app and follow the on-screen instructions to complete the process.

4. Play from HDMI Playback Devices

The projector can be connected to various HDMI playback devices such as a TV box, TV stick, DVD player, set-top box (STB), gaming console, or other devices.

- ① Connect the projector to an HDMI playback device with an HDMI cable (not provided).
- ② Press  to access the settings menu, then select **[Channels & Inputs] > [Input] > [HDMI]**.





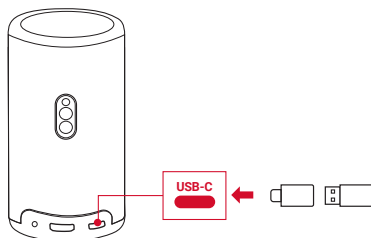
The projector will automatically start HDMI playback once connected to an HDMI playback device for the first time.

5. Play from a USB Drive

With this projector, you can enjoy music, video, and pictures, or install apps that are stored on a USB 2.0 drive.

- ① Download the **Nebula File Manager** app from Google Play.
- ② Insert a USB-A drive (with the USB converter) or USB-C drive into the USB port.

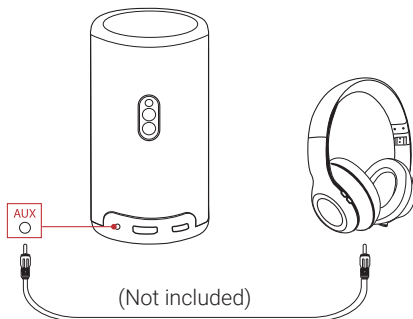
- ③ Select music, videos, or photos from the USB drive that you want to play and press .
- ④ Press  to stop playback.



6. Play Through External Sound Devices

This projector can also be connected to external sound output devices, including headphones and speakers; when connected to external speakers, the built-in speaker system is disabled.

- ① Use a 3.5 mm audio cable or an adapter (not provided) to connect your headphones or external speakers.
- ② Connect the other end of the cable to the AUX port on this projector.
 - You will hear audio from your headphones or external speakers.



Before connecting headphones and putting them on, turn down the volume to avoid hurting your ears.

7. Bluetooth Speaker Mode

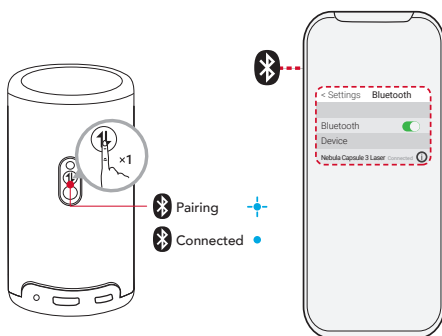
You can use this projector as a standalone Bluetooth speaker.


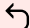
① To switch to Bluetooth speaker mode, you have two options:

A: Press  on the projector.

B: On the home page, select  > **Settings** > **Display & Sound** > **Sound** > **Turn on the Bluetooth Speaker Mode**.

② Enable Bluetooth on your smartphone and select **Nebula Capsule 3 Laser** to connect.



To exit Bluetooth speaker mode, press  on the projector or press and hold  on the remote for two seconds.

System Update

To fully enhance your experience with this product with the latest features, you are recommended to update the system from time to time.

To update the system, go to **[Settings] > [System] > [About] > [System update]**.

Specifications

Specifications are subject to change without notice.

Input	5V == 3A or 9V == 3A or 12V == 3A or 15V == 3A or 20V == 2.25A
Power Consumption	< 45W
Standby Power Consumption	< 0.5W
Resolution	1920 × 1080
Compatible Resolutions	480p (60 Hz), 576p (50 Hz), 720p (30 Hz), 720p (50 Hz), 720p (60 Hz), 1080p (24 Hz), 1080p (30 Hz), 1080p (50 Hz), 1080p (60 Hz), 4K2K (23.976 Hz), 4K2K (25 Hz), 4K2K (30 Hz), 4K2K (50 Hz), 4K2K (60 Hz), 4096 (23.976 Hz), 4096 (25 Hz), 4096 (30 Hz), 4096 (50 Hz), 4096 (60 Hz)
Contrast Ratio	500:1
Aspect Ratio	16:9
Screen Size	40" to 120"
Throw Ratio	1.2:1

Throw Distance	1.06~3.18 m / 3.48~10.43 ft
Light Source	Laser
Focus	Auto
Keystone Correction	Auto
Speaker Output Power	8W
Noise	<28dB
Wi-Fi	WiFi5 802.11a/b/g/n/ac ,Dual Frequency 2.4/5GHz
Bluetooth Version	5.1
Bluetooth Range	25 m / 82 ft
USB Format	FAT, FAT32
Operating Temperature	For Europe and UK, 0°C to 25°C For other countries and regions, 0°C to 35°C / 32°F to 95°F
Remote Control Batteries	AAA x 2

Troubleshooting

① Fails to Power On

- The projector may be out of power. Charge the projector for 15-30 minutes and see if the power button light turns on.


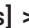

② Cannot Charge

- Use the included adapter and charging cable to charge the projector.
- Try a different adapter (at least 45W) and USB-C charging cable.

③ Cannot Connect to a Wi-Fi Network

- Place your projector within 16 ft / 5 m of the router and reconnect.
- Set your router to 2.4 GHz or 5 GHz and retry.
- Restart your projector and router and retry.
- Try a different Wi-Fi network or your phone's hotspot.

④ Blurry Image

- Slightly move the projector or press  on the remote to start autofocus.
- To manually adjust the focus, go to **[Settings] > [Projector] > [Focus Settings] > [Manual Focus Correction]**, and use  and  on the remote.
- Adjust the projection angle and direction as well as the height of the projector if necessary.

⑤ Distorted Image

- Update the firmware to the latest version via **[Settings] > [System] > [About] > [System update]**.
- Go to **[Settings] > [Projector] > [Image Correction] > [Perform Manual Keystone Correction]**.
- Move the projector left or right, or alter the tilt if necessary.

⑥ No HDMI Signal

- Use a different HDMI cable.
- Connect your projector with another HDMI playback device.

- Connect the HDMI playback device to your TV via HDMI cable to check if the device or cable malfunctions.
- Adjust the HDMI playback device's output resolution / frequency to be the same as the projector's.

⑦ How to Play Videos without Wi-Fi

- Download videos to a USB drive in FAT32 format. For the following steps, see Play from a USB Drive.

Trademarks



The Bluetooth® word mark and logos are registered trademarks owned by the Bluetooth SIG, Inc. and any use of such marks by Anker Innovations Limited is under license. Other trademarks and trade names are those of their respective owners.



HDMI, and HDMI logo and High-Definition Multimedia Interface are trademarks or registered trademarks of HDMI licensing LLC in the United States and other countries.



Manufactured under license from Dolby Laboratories. Dolby, Dolby Audio and the double-D symbol are trademarks of Dolby Laboratories Licensing Corporation.