

CINEPEER

Designed by ZHIYUN



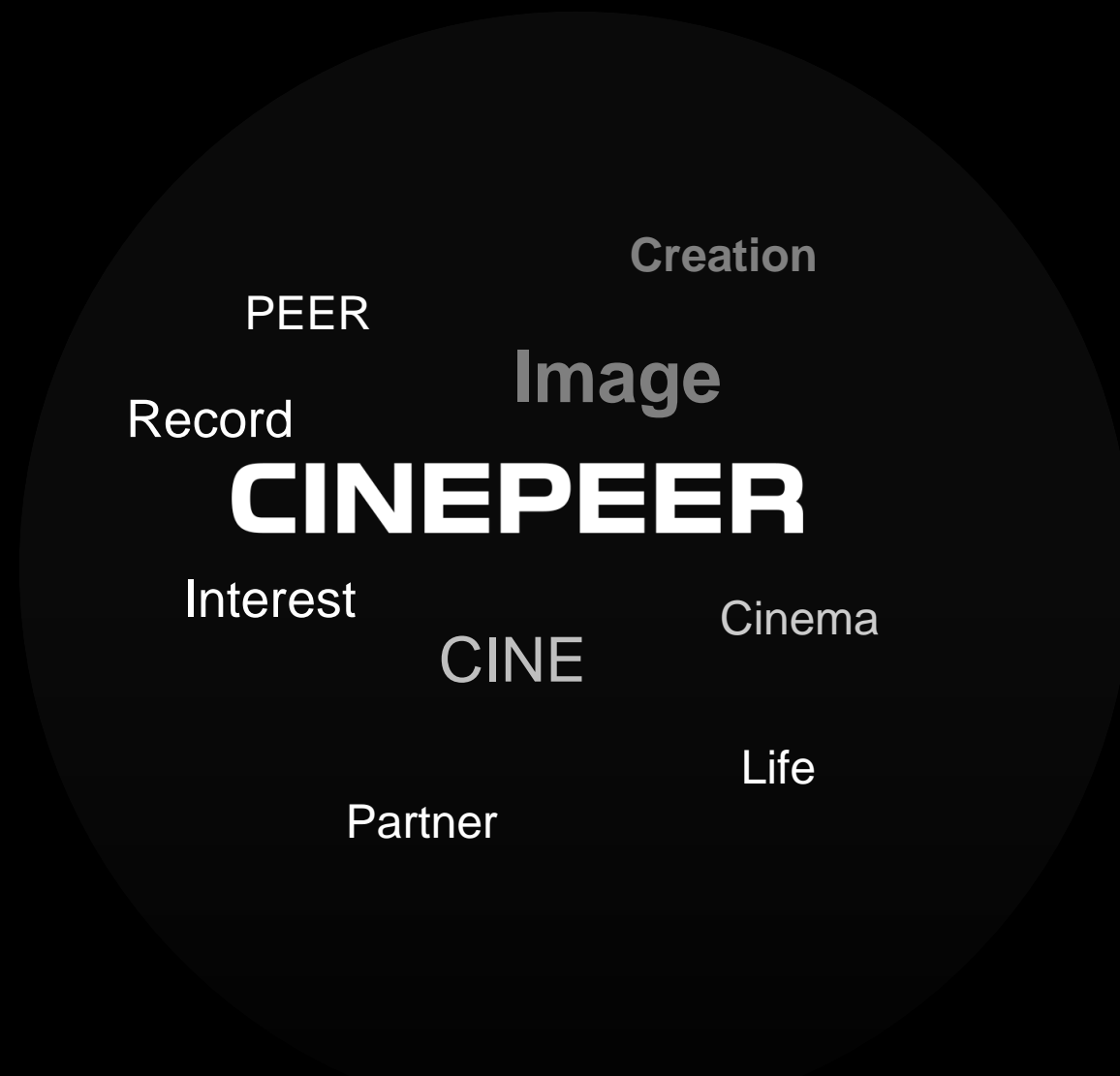
# **CINEPEER SMOOTH 5E**

Empower Novices to Be Masters

# What is CINEPEER?

ZHIYUN follows the principle of "simple names for better products." The affordable CINEPEER series is named with meaningful implications. "CINE" stands for "cinema" and "PEER" means "partner," highlighting its role as your companion in video creation.

ZHIYUN's products emphasize branding and innovation, leading to advanced designs and excellent craftsmanship, but their prices are relatively high. The CINEPEER series, however, maintains ZHIYUN's core performance with excellent quality and exceptional affordability. It meets the needs of more users, allowing more enthusiasts to experience the joy of easy creation.



# Future Vision Of CINEPEER

We aim for every creator to create effortlessly, **transforming technology from a barrier into a bridge for creativity**. Our goal is for users to find joy and satisfaction in the creative process. By maintaining high-quality standards, we strive to meet the growing demands for creative production, ensuring that every captured moment is engaging and fun.

**CINEPEER**

The field of mobile video photography has long been committed to lightweight designs to enhance portability and ease of use, often at the expense of professional control and performance.

Foldable smartphone gimbals currently available in the market restrict the flexibility of smartphone camera movements due to their structural limitations. The fake or stripped-down versions of 3-axis gimbals fail to achieve 360° barrel shots and smooth tracking shots from low to high angles, only meeting basic stabilization and camera movement requirements.

A creative-oriented smartphone gimbal, as desired by professional photographers, should prioritize exceptional control performance and meet the quality standards of the film industry. Such a gimbal should not only unleash the full potential of smartphones but also incorporate more intelligent shooting features, adding greater enjoyment to mobile video creation.

CINEPEER SMOOTH 5E has the potential to be a creative smartphone stabilizer. It features an **orthogonal 3-axis structure** for a wider range of camera movements, seamlessly integrating quick controls for a smoother shooting experience. With **intelligent shooting technology** and **advanced AI algorithms**, users can enjoy rapid content creation and professional shooting.





# What challenges does the SMOOTH 5E address?



## •Poor Video Quality on Smartphone

Smartphone-recorded videos often suffer from noticeable shakiness, blurriness, and an overall lack of visual polish, making them unpleasant to watch.



## •Limited Skills in Camera Moves

Video footage tends to be static and monotonous, lacking the smooth transitions and skilled camera moves.



## •Lack of Creative Video Ideas

Mobile creators want to produce attractive and creative videos effortlessly with stabilizers.



## •Choice Overload & Misleading Info

The market of mobile gimbal is cluttered with mixed-quality products. Many budget-oriented options prioritize marketing hype over true performance and build quality.

# Key Highlights of SMOOTH 5E



Steady Camera Movement



Simple Operation. Full Features



Magnetic AI Tracker



Built-in & Magnetic Fill Light



Smart Shooting App



Best Value. High Quality

# CINEPEER SMOOTH 5E Intelligent. Simple. Professional.

Product	CINEPEER SMOOTH 5E	Other Brands
Payload	150g-330g	≤250g
Tracking	App & Magnetic AI Tracking	No Tracking/Only App Tracking
Fill Light Configuration	A Built-in Fill Light. Support Two Magnetic Fill Lights	No Fill Light/ Need Fill Light Phone Clamp
Fill Light Performance	High CRI & Brightness	Low CRI & Brightness
Structure	Orthogonal 3-axis Structure Extensive Camera Movement	Limited Rotation 3-axis Structure Limited Camera Movement
Angle of View	Wide-angle & Standard View	Standard View
Intelligent App	Intelligent Shooting: ZY Cami App Professional Shooting: StaCam App	One App



# Higher Payload Capacity, Wider Range of Movement

SMOOTH 5E features an orthogonal 3-axis structure that accommodates various smartphone sizes for creation while ensuring smooth and stable low-angle tracking.

The structure enables true 360° unlimited rotation, effortlessly unlocking immersive "Vortex Mode" visual effects. Professional smartphone filmmaking is within easy reach.



# Capture Cinematic Footage with Gimbal Mode

SMOOTH 5E features 5 gimbal modes based on popular camera movement techniques used by photographers.

**Pan Follow Mode:**

The pan axis motor follows the movement of the gimbal handle.

**Follow Mode:**

The tilt axis and the pan axis motor follow the movement of the gimbal handle.

**Lock Mode:**

The tilt axis, roll axis and pan axis motors are all locked.

**Vortex Mode:**

The tilt axis motor rotates upward by 90°, and the three axis motors follow the rotation of the handle.

**Point of View Mode:**

The tilt axis, roll axis and pan axis motors all follow the movement of the gimbal handle.



# Operate Professional functions at Your Fingertips

SMOOTH 5E integrates a one-key control function, enabling quick access to independent menus, modes, and the use of dials and joysticks.



## Mode Display

Show Current Mode

## Rotary Dial

Resolution/DISP Button

Album/ISO, Exposure Settings Button

## Fill Light

Long Press to Turn On

## MENU Button

Access the APP Menu

## MODE Button

Switch Modes

## Photo/Video Button

## Joystick

Control Direction



# Upgraded AI Stabilization Algorithms for Rapid Video Production

ZHIYUN is dedicated to the innovation and development of professional stabilizer technology and stabilization algorithms. Mobile stabilizers support professional shooting with high-torque motors, bringing smoothness to everyday mobile creation.



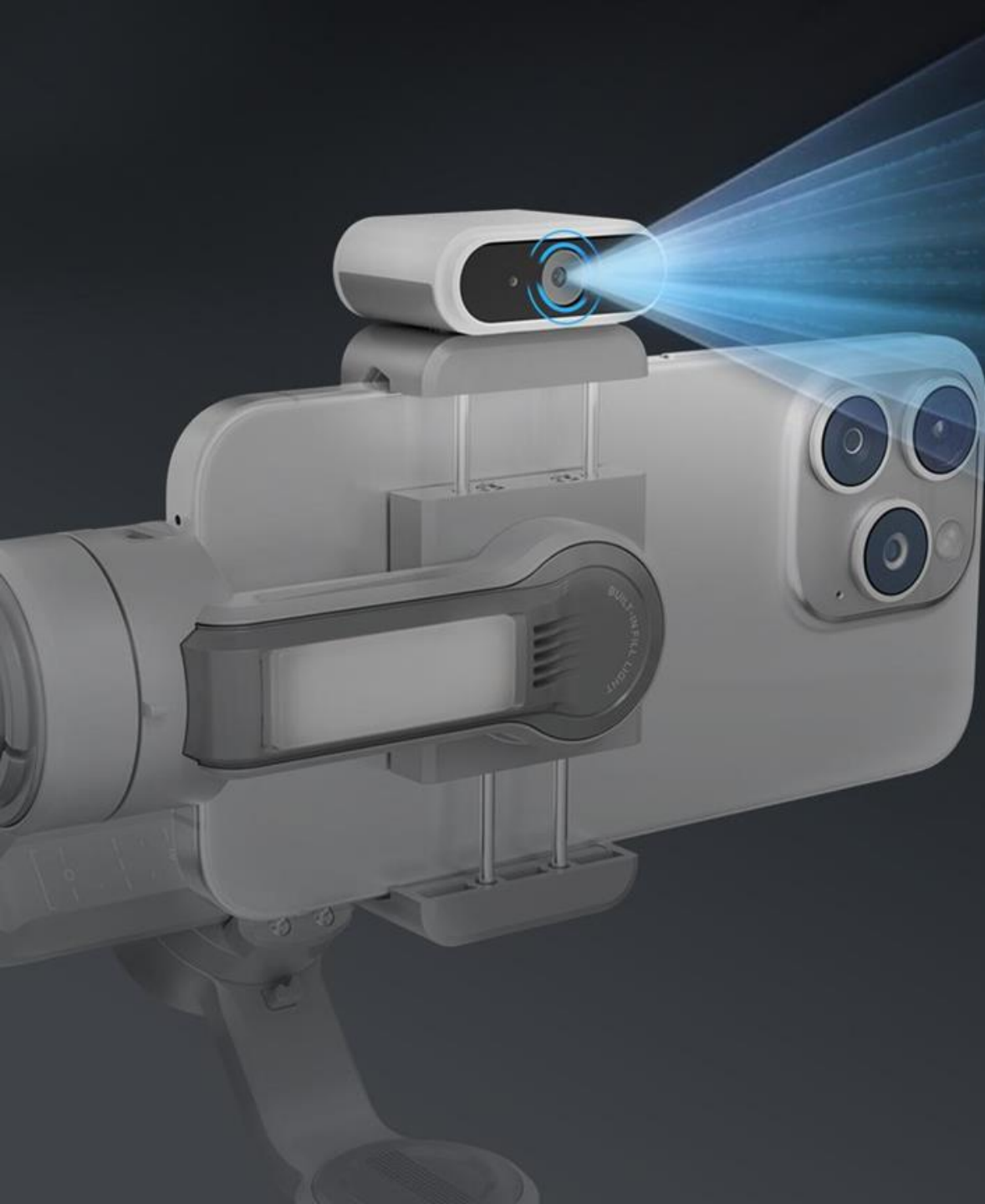




## Cinematic Quality with 3 Fill Lights

ZHIYUN utilizes professional fill light and heat dissipation technology. The tilt axis is equipped with a high-power fill light boasting 680 lux peak illuminance. Two additional magnetic fill lights, combined with the built-in unit, provide an unbeatable illuminance of 2040 lux at peak.





## Advantages of AI Tracker

- Rapid and responsive target tracking.
- Native camera/App-based gesture control for start/stop recording.
- Re-identify and recover the object tracking even after the footage was reframed.
- Maintaining target tracking, unaffected by strong light interference.

# Novice to Master, Dual Intelligent Tracking with 'APP + Module'

ZY CAMI APP features cutting-edge AI tracking algorithms. A magnetic AI tracker is integrated for precise tracking and seamless control. SMOOTH 5E combines the dual advantages of 'App intelligent control + modular tracking' to empower novices to become masters.



AI Tracker





# ZY Cami App: Effortless Video Creation for Novices with Intelligent Interaction

In addition to basic shooting functions, ZY Cami App features exclusive SMART mode and a vast collection of intelligent video templates, intelligent editing, one-click video production and a high-quality video interactive community.



LiveMaster for Easy Livestreams



SMART Mode with AI  
templates



Video Community



Professional Editing Assistant





## StaCam App: Create Professional Videos with Just a Mobile

StaCam App integrates essential features for film and video production, including customizable framing, 46 color LUT presets, pseudocolor display, zebra stripes assistance, and focus peaking.

It supports adjustment for various lens focal lengths, beauty effects, and smartphone video bitrate and encoding. Users can quickly produce professional-grade advanced-version videos.



Supports lens  
adjustments



Supports params  
adjustments

# Product Specifications

Gimbal Size(Folded)	311*168*52mm	Built-in Battery Capacity	2600mAh
Net Weight(with Tripod)	625g	Tilt Mechanical Range	349°
Battery Runtime	2H20min - 26H	Roll Mechanical Range	349°
Charging Time	2H - 3.5H	Pan Mechanical Range	360°
Compatible Smartphone Weight	150g - 300g	Operation Temperature	-10°C - 45°C
Horizontal Arm Adjustment Range	±47mm	Charging Ambient Temperature	5°C - 40°C
Mounting Clamp Supporting Range	50mm - 90mm	Operation Voltage	6.5V - 8.4V
Compatible Models	Smartphones that their width is within the holder's capable width	Operation Current	70mA - 3000mA
Smartphone Thickness	<10mm	Charging Voltage	5V - 9V
Bluetooth	Bluetooth 5.1	Charging Current	1600mA

**Battery Runtime:** The data is collected under the below conditions: a specified temperature of 25°C; the gimbal has been balanced and mounted with an iPhone XR(220g). When three fill lights are set at the highest brightness level, the runtime of the gimbal is 2h20min. When the fill lights are off and the gimbal is in standby state, the runtime is 26h.

**Charging Time:** Under the condition of a 25°C ambient temperature using a 15W PD fast charger, the charging time is 2h. Under the condition of a 25°C ambient temperature using a 5V/2A rated power adapter, the charging time is 3.5h. The charging time may vary due to environmental factors, and actual results may differ.

**Q&A**

### **1. What are the differences between SMOOTH 5E and ZHIYUN SMOOTH 5S?**

SMOOTH 5E supports the magnetic AI tracker, while SMOOTH 5S currently does not support this feature.

### **2. What are the upgrades or differences between SMOOTH 5E and CQ5?**

SMOOTH 5E features an advanced “orthogonal 3-axis” structure with wider camera movement.

SMOOTH 5E features a built-in fill light and supports magnetic fill lights for enhanced lighting options.

SMOOTH 5E is compatible with the StaCam App, enabling users to access a range of professional features.

More software and hardware integrations will be available in future updates.

### **3. What features does the AI tracker of SMOOTH 5E offer?**

The tracker supports gesture control to activate face tracking, photo taking, and video recording (start/stop).

### **4. What smartphones are compatible with SMOOTH 5E?**

Due to the wide range of supported brands and models, please refer to the official website for the full SMOOTH 5E compatibility list.



### **5. What is the power of the SMOOTH 5E's magnetic fill light? Is it sold separately?**

The maximum power of the magnetic fill light is 2W. It can be purchased separately or included in the COMBO version.

### **6. What's the difference between smart tracking via the App and the magnetic tracker?**

The ZY Cami App features gesture-activated and trigger-activated face tracking. It also supports subject selection by tapping on the screen to track people, pets, and other subjects. The magnetic tracker supports gesture-based face tracking only and does not support object tracking. However, it offers quicker activation and more accurate tracking.

### **7. How long does it take to fully charge SMOOTH 5E? What's the battery life?**

With a fast charger of 15W or above, SMOOTH 5E can be fully charged in about 2 hours. The working time is approximately 2 hours and 20 minutes, with slight variations depending on usage conditions.

### **8. What shooting modes does SMOOTH 5E support?**

Pan Follow (PF): Ideal for capturing horizontal panning shots, commonly used for street scenes.

Lock (L): Maintains a fixed forward-facing angle for consistent framing.

Follow (F): Follows your movements to simulate the subject's point of view.

POV: Provides a dynamic, first-person flight-style view with lateral tilt.

Vortex (V): Supports forward tilt for creating "Inception-style" rotation shots.

### **9. Do I need to balance the stabilizer during use? How to correct tilted footage?**

For first-time use, adjust the arm and phone clamp to achieve proper balance.

If the footage is tilted during shooting, check if the phone clamp is secured and aligned correctly. If the issue persists, refer to the user guide for instructions on auto-calibration or six-side calibration.

### **10. What features does SMOOTH 5E support with the ZY Cami App?**

The ZY Cami App features a SMART mode that supports one-click video creation. It also offers shooting tutorials and camera movement templates across 7 categories: City, Home, Food, Store Visits, Nature, Park, and Seaside, with dozens of scene templates and step-by-step guidance.

### **11. What purchase options are available for SMOOTH 5E, and what are the differences?**

Currently, SMOOTH 5E is available in a standard version and a COMBO version. The COMBO version includes a magnetic fill light and an AI tracker. For more details about the options, please refer to where you purchased it.

**THANKS!**

**CINEPEER**