

## APP



Google Play and the Google Play logo are trademarks of Google Inc.



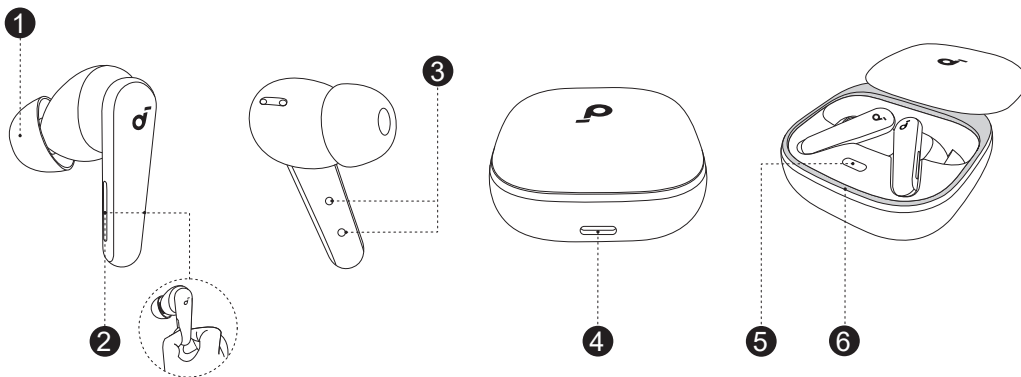
Apple and the Apple logo are trademarks of Apple Inc.



Download the soundcore app to explore the ambient sound features, EQ settings, Dolby Audio, HearID sound, firmware updates, and other exciting features.

If your earbuds cannot connect to the soundcore app, try re-installing the app or updating it to the latest version available in your mobile app store.

## OVERVIEW



### 1. Ear Tip

- M-size ear tips are pre-installed at the time of purchase.

### 2. Earbud Control Area

- Squeeze the control area on the earbud stems to manage different functions.

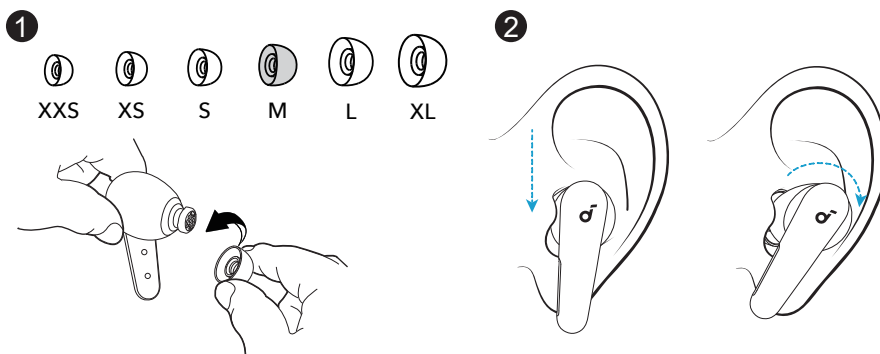
### 3. Charging Contacts

### 4. USB-C Charging Port

### 5. Charging Case Button

### 6. LED Light Strip

## WEARING



### 1. Try different ear tips to find the best fit.

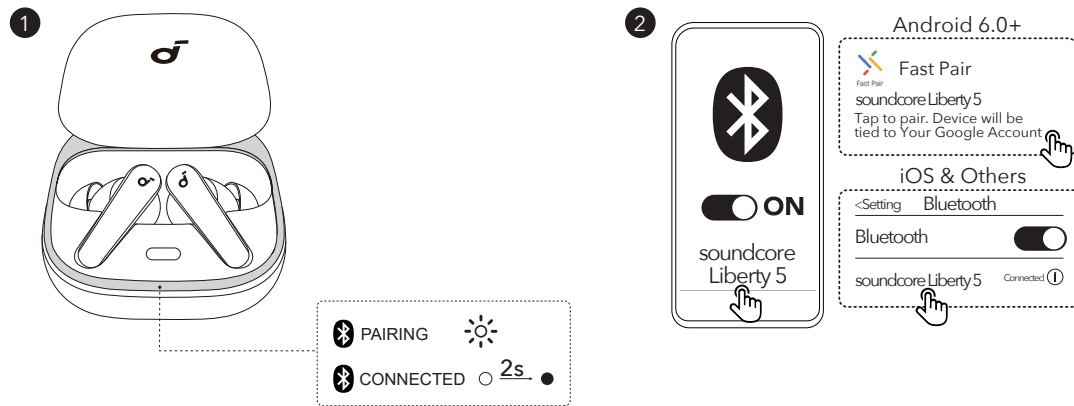
### 2. Gently place the earbuds into your ear canal and rotate them until they feel snug.

### 3. Use the fit test in the soundcore app to ensure optimal active noise cancelling performance.



Dust, earwax, or other debris can accumulate in the earbuds. To maintain optimal sound quality, clean them regularly. Use a slightly moistened cotton swab with rubbing alcohol to gently wipe the metal mesh filter beneath the rubber ear tips. Make sure the alcohol has completely dried on the metal mesh filter before using the earbuds again.

## POWERING ON AND PAIRING

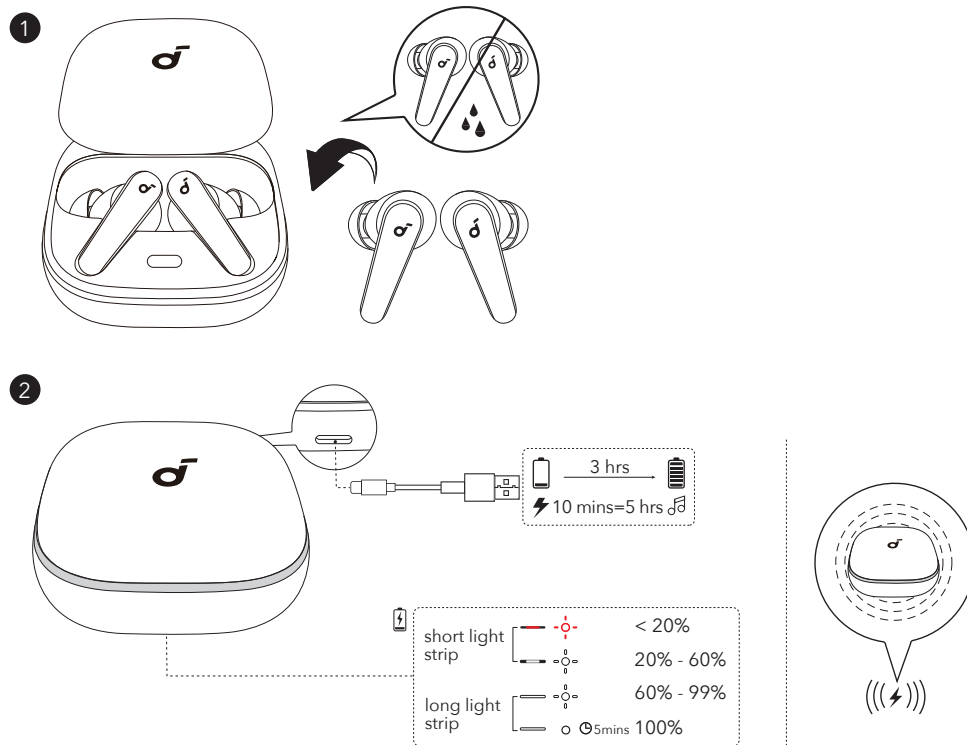


1. Slide open the charging case. The earbuds will power on automatically and enter Bluetooth pairing mode.

**Google Fast Pair:** Instantly pair with your Android smartphone (running Android 6.0 or above) using Google Fast Pair.

2. Select **soundcore Liberty 5** from your device's Bluetooth list to connect. Once connected, the LED light strip will remain on for 2 seconds before turning off.

## CHARGING



1. Ensure the earbuds and the USB-C charging port are completely dry before charging. Place the earbuds in the charging case and close it.

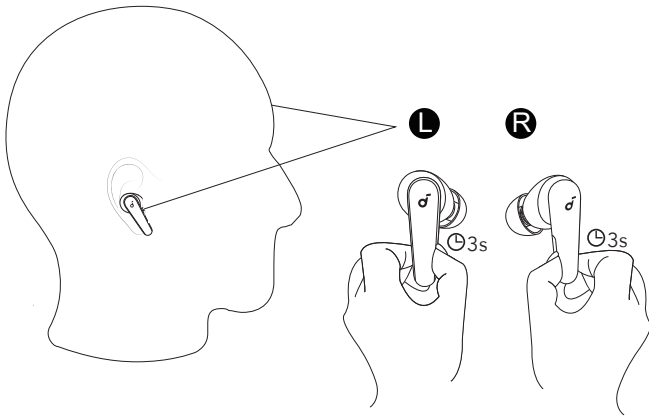
2. Connect the charging case to a power supply using the provided USB-C charging cable. For wireless charging, place the charging case at the center of your wireless charger. Recharging the charging case with earbuds takes 3 hours via cable and 4 hours wirelessly. Charging the earbuds for 10 minutes provides 5 hours of playtime.



When the battery level of the charging case drops below 10%, it will stop charging the earbuds.

## DUAL CONNECTIONS

1



2



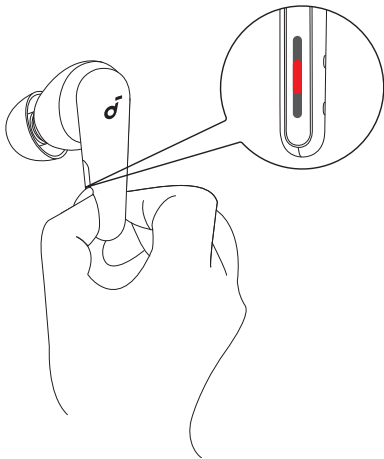
Dual Connections is enabled by default.

To connect a second device while already connected to one, pinch the control area on both earbud stems for 3 seconds until you hear a voice prompt for pairing mode. Then, proceed to pair with the second device.



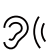


You can also enable Dual Connections through the soundcore app. In the app, go to **Settings > Dual Connections > Enable Dual Connections > Connect New Device**.

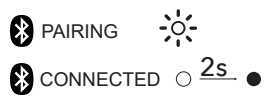
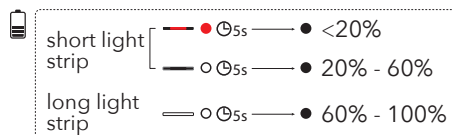
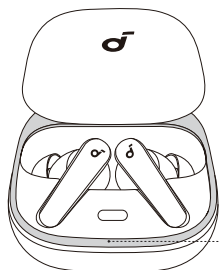
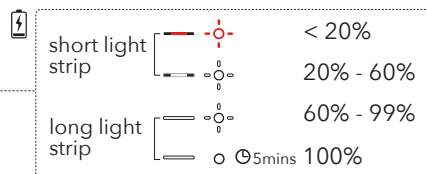
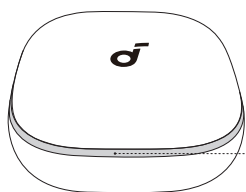
## CONTROLS









- Press the highlighted area for the best operational experience.
- You can customize controls in the soundcore app.

		Using Dual Earbuds	Using Single Earbud
	Play/Pause Audio	Squeeze Once (L/R)	Squeeze Once
	Play the Next Track	Squeeze Twice (R)	Squeeze Twice
	Play the Previous Track	Squeeze Twice (L)	\
	Answer a Call	Squeeze Once (L/R)	Squeeze Once
	Reject/End a call	Squeeze and Hold for 2 Seconds (L/R)	Squeeze and Hold for 2 Seconds
	Mute/Unmute Mic * You may need to enable this feature through Controls in the soundcore app.	Squeeze Once (L/R)	Squeeze Once
	Switch Between ANC and Transparency Modes	Squeeze and Hold for 2 Seconds (L/R)	Squeeze and Hold for 2 Seconds

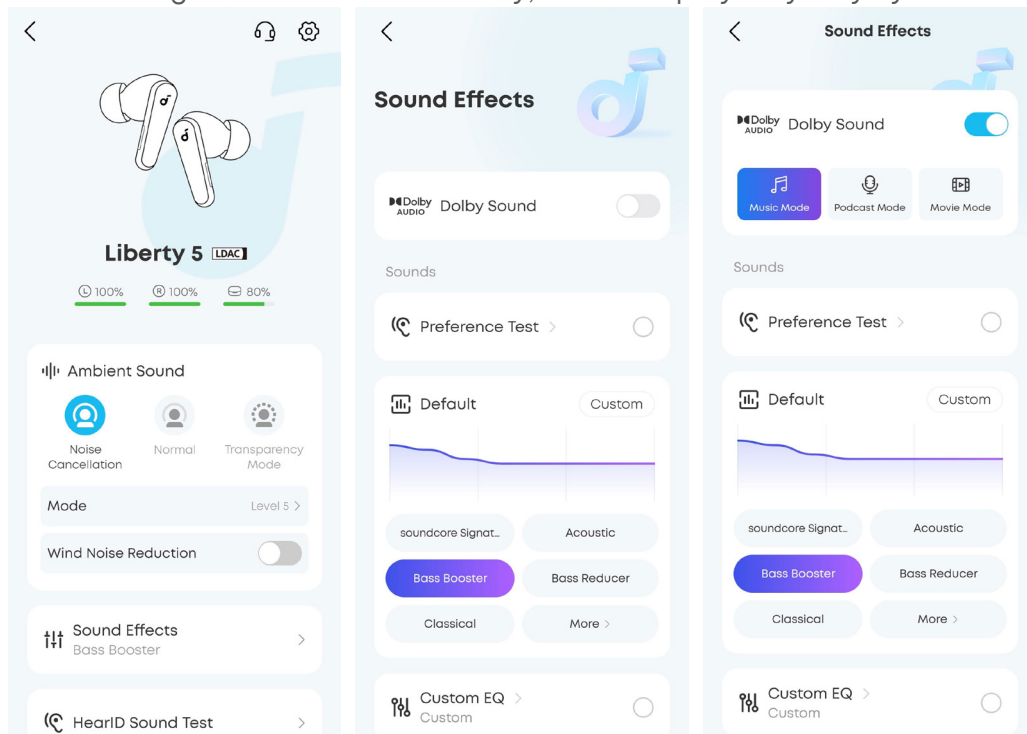
## LED LIGHT GUIDE



	Flashing white rapidly		Flashing red slowly
	Flashing white slowly		Steady red
	Steady white		Light off

## DOLBY AUDIO

Note: UI images are for illustration only; actual display may vary by software version.



Dolby Audio delivers an immersive listening experience by placing sound all around you. You can choose between three Dolby Audio modes in the soundcore app:

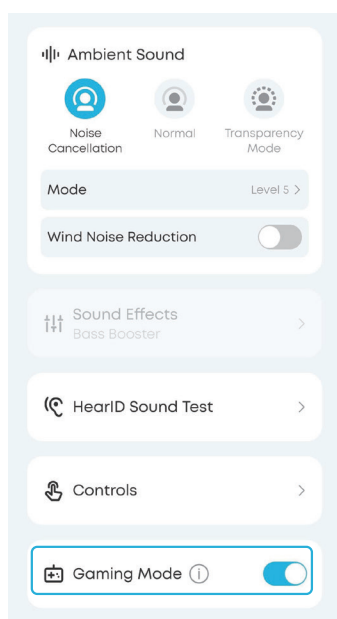
**Music Mode:** Delivers immersive, detailed sound for your favorite tunes, making every note and beat clear and vivid.

**Podcast Mode:** Optimized for clear, focused vocals, perfect for listening to spoken content.

**Movie Mode:** Enhances your cinematic experience with rich, immersive audio that brings every action to life.

Note: Dolby, Dolby Audio, and the double-D symbol are trademarks of Dolby Laboratories Licensing Corporation. Manufactured under license from Dolby Laboratories. Confidential unpublished works. Copyright © 2020–2025 Dolby Laboratories. All rights reserved.

## GAMING MODE



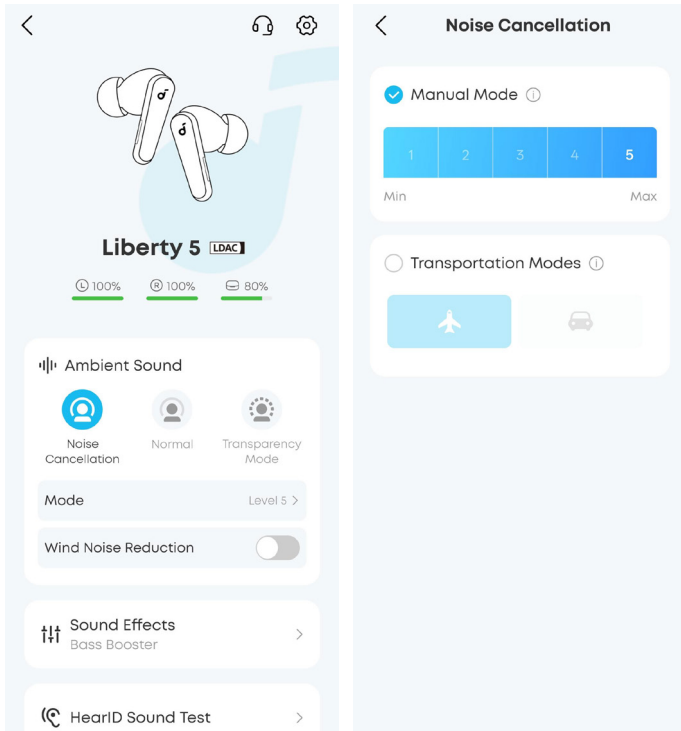
Provides precise audio cues for a competitive edge in gaming, allowing you to capture every detail and react quickly.



Gaming mode and LDAC/Dolby Audio cannot be turned on at the same time.

## AMBIENT SOUND

Note: UI images are for illustration only; actual display may vary by software version.



In the soundcore app, you can select from Noise Cancellation, Normal, or Transparency Mode.

**Noise Cancellation (Level 1 to 5):** Optimizes noise cancellation by adjusting to your ears and environment. You can also choose different modes of transportation:

- **Airplane Mode:** Provides powerful noise cancellation to reduce airplane engine noise, ensuring a peaceful listening experience during flights.
- **Anti-Bump Mode:** Optimizes noise cancellation to reduce disturbances in bumpy rides, ensuring stable audio during travel in vehicles or on rough terrain.

**Normal:** Enjoy balanced sound without noise cancellation.

**Transparency:** Hear ambient sounds clearly while enjoying music.

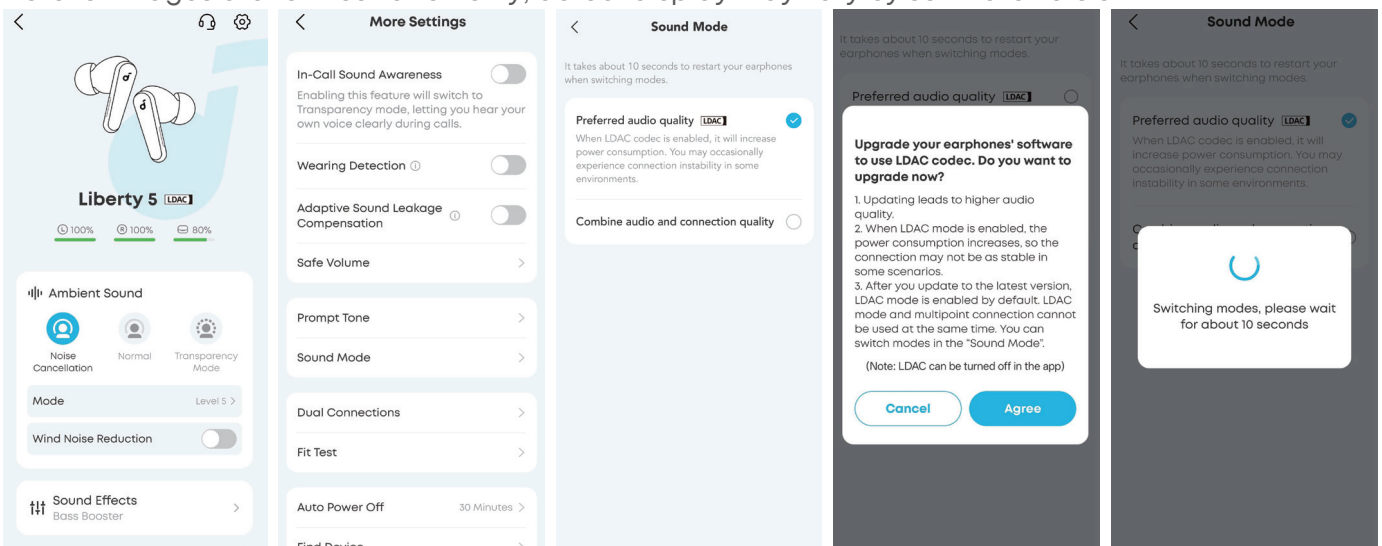
## LDAC

Use devices running Android 8.0 or later to experience LDAC-quality sound.

LDAC delivers higher sound quality but increases power consumption, which may reduce playtime.

Enable LDAC in low-interference environments for a stable Bluetooth connection.

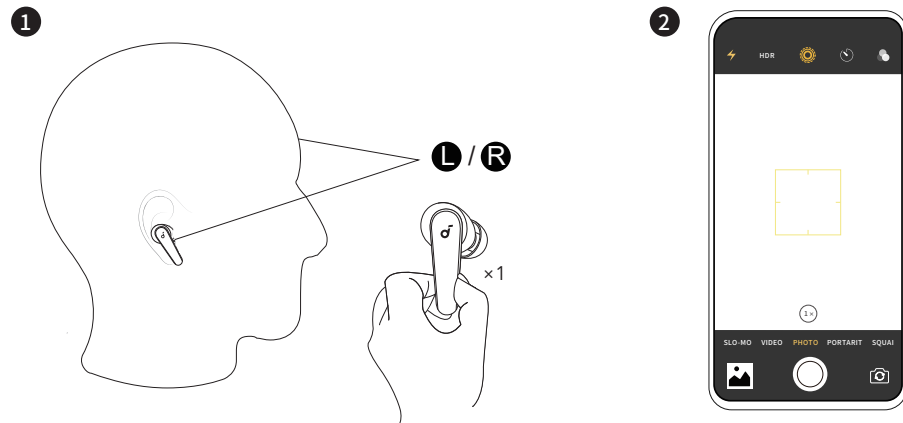
Note: UI images are for illustration only; actual display may vary by software version.



In the soundcore app:

1. Select Sound Mode.
2. Tap Preferred audio quality.
3. Tap Agree to proceed.
4. Switching audio codecs takes about 10 seconds. You may be prompted to update the earbuds' firmware if an update is available.

## REMOTE PHOTO SNAP

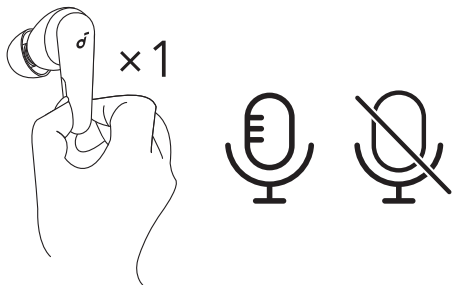


When the earbuds are connected to the phone via Bluetooth, and are being worn, open the camera on the phone. Then, squeeze either earbud stem once to remotely control the phone to take a photo.



- You may need to enable this feature through Controls in the soundcore app.
- Due to system settings, this feature is not supported on some phones.

## QUICK MUTE

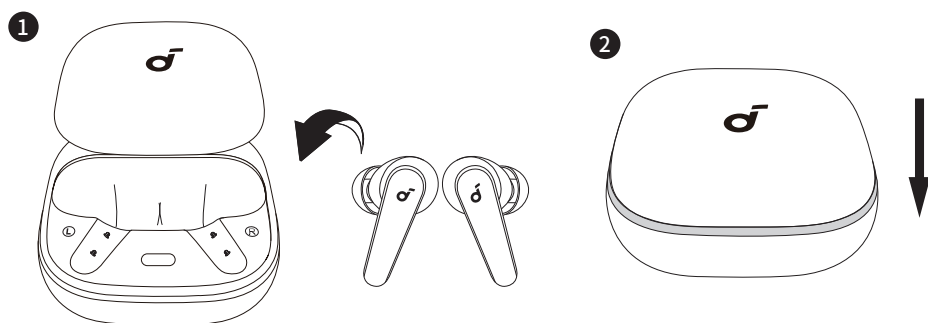


During a call or meeting, squeeze either earbud stem once to mute or unmute the microphone (default is unmuted).



- When the microphone is muted or unmuted, you will hear a voice prompt indicating the change. If the microphone remains off, a voice prompt will repeat every 20 seconds to indicate the mute status.
- You may need to enable this feature through Controls in the soundcore app.

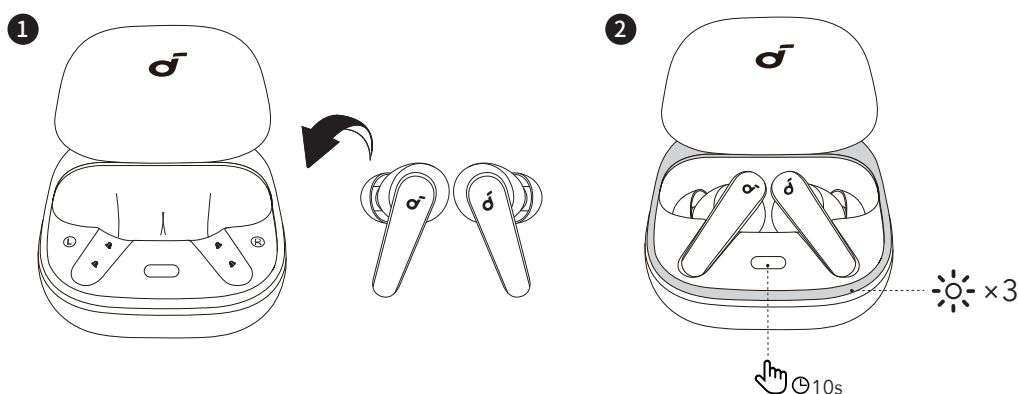
## POWERING OFF



To power off, return both earbuds to the charging case and close it.

 When removed from the case, the earbuds automatically power off after 30 minutes if not connected to any device. The duration can be set in the soundcore app.

## RESET



Place the earbuds in the charging case and leave the case open. Press and hold the charging case button for 10 seconds until the LED light strip flashes white three times.

## FIRMWARE UPDATE

You will be notified once a new firmware version of the earbuds or charging case is detected when the earbuds are connected to the app. Ensure the earbuds are in the charging case and the case remains open until the firmware update is complete. During the update, ensure the battery levels of both the earbuds and the charging case are above 20%, and avoid any usage.

## SPECS

Note: Specifications are subject to change without notice.

Input	5V $\overline{\text{---}}$ 0.8A
Rated Output Power	10mW
Battery Capacity	60mAh $\times$ 2 (Earbuds) 580mAh (Charging Case)
Charging Time	Up to 1 Hour (Earbuds) Up to 3 Hours (Charging Case with Earbuds)
Playtime (ANC Off)	Up to 12 Hours (Up to 48 Hours with Case)
Playtime (ANC On)	Up to 8 Hours (Up to 32 Hours with Case)
Driver	9.2mm
Frequency Response	20HZ-40KHZ
Impedance	17 $\Omega$



Waterproof and Dustproof Level (Earbuds)	IP55
Bluetooth version	Bluetooth 5.4
Bluetooth range	10m

## CUSTOMER SERVICE



service@soundcore.com  
support.mea@soundcore.com (For Middle East and Africa Only)  
support@anker.com ( 日本 )  
support.kr@anker.com ( 한국 )



+1 (800) 988 7973 (US/Canada)  
+44 (0) 1604 936200 (UK)  
+49 (0) 69 9579 7960 (DE)  
03 4455 7823 ( 日本 )  
+86 400 0550 036 ( 中国 )  
+82 1666-8470 ( 한국 )  
+971 8000320817 (UAE)  
+966 8008500030 (KSA)  
+965 22069086 (Kuwait)  
+20 8000000826 (Egypt)  
+90 (850) 460 14 14 (Türkiye)  
+8 (800) 511-86-23 (Russia)  
000-8000-504-414 (India)

Note: The 'x' of SN Code: xxxxxxxxxxxxxxxx is a variable, see below table.

Variable 'x'	Range of variable	Content
Eighth	8,9,A,B,C...	Denotes the year, 8 means 2018, 9 means 2019, A means 2020, B means 2021, C means 2022, and so on.
Ninth and tenth	01,02,03...	Denotes weeks, 01 means the first week in this year, 02 means the secondary week in this year, and so on.
Eleventh	1-7	Denotes date, 1 means Monday, 2 means Tuesday..., 7 means Sunday and so on.
The last five	00001-99999	Denotes serial No.

Hereby, Anker Innovations Limited declares that this device is in compliance with The Product Security and Telecommunications Infrastructure (Security Requirements for Relevant Connectable Products) Regulations 2023. For the Statement of Compliance, visit the website:  
<https://uk.soundcore.com/pages/psti-related>.