

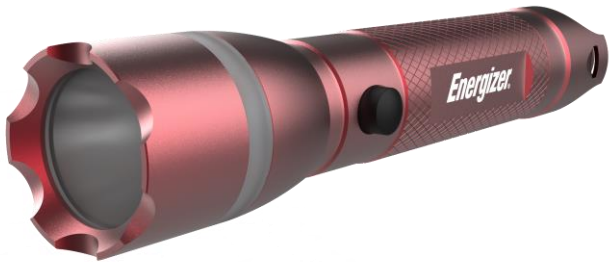
3AAA Emergency Safety Metal Handheld

ESMH32



This *Energizer*® emergency light has all the features you need to help you in an emergency situation. Along with its great performance and durability, it also has a red light and red flashing around the lens for signaling as well as a flashing light in the back for “be seen” while using the light. In addition, the design comes with an emergency whistle in the back of the light and a carabiner for easy storage/carrying.

Lumens	Runtime	Beam Distance	Drop	Water Ingress



DESIGN BENEFITS	
✓	Durable construction
✓	Red light and red flashing for signaling
✓	Flashing in the rear for “be seen”
✓	Built-in whistle
✓	Carabiner

PERFORMANCE BENEFITS	
✓	Excellent brightness
✓	Long beam distance
✓	15X brighter than standard LED

LIGHT AND POWER SOURCE	
✓	Features LED technology
✓	Operates on 3 AAA batteries

BATTERY SPECIFICATIONS	
Battery Type	ENR Max Alkaline
Battery Size	AAA
Number of Cells	3

BATTERY PERFORMANCE			
Modes	Lumens (lm)	Runtime (h)	Beam Distance (m)
High	300	1:15	170
Low	40	25	60

WARNING	
A small percentage of people may experience a seizure when exposed to certain visual images, including flashing lights and strobing lights. Even people who have no history of seizures or epilepsy may have an undiagnosed condition that can trigger these “photosensitive epileptic seizures.” These seizures may have a variety of symptoms, including lightheadedness, altered vision, eye or face twitching, jerking or shaking of arms or legs, disorientation, confusion, or momentary loss of awareness. Seizures may also cause loss of consciousness or convulsions that can lead to injury from falling down or striking nearby objects. Immediately stop using this product and consult a doctor if you experience any of these symptoms. If you have a history of seizures or epilepsy, consult a doctor before using.	

Modes
High, Low, Red Flashing, Emergency Strobe

PRODUCT SPECIFICATIONS	
Weight:	124 Grams / 4.37 Ounces
Dimensions:	175 mm x 35 mm x 35 mm 6.89” x 1.38” x 1.38”

ELECTRICAL CHARACTERISTICS	
Nominal Power Consumption:	5 W
Batteries:	3 AAA Energizer E92 4.5V dc
LED Specifications:	LED 3.0V cc / 1100 mA

DISCLAIMERS	
Tested according to ANSI FL1 Standards.	
This device complies with part 15 of the FCC Rules.	
Operation is subject to the following two conditions: (1) This device may not cause harmful interference, and (2) this device must accept any interference received, including interference that may cause undesired operation.	

CERTIFICATES AND COMPLIANCE	
EMC, EN62471, FCC	