



# 20W POCKET FILL LIGHT

FIVERAY (M20C) | FIVERAY (M20) | My Light. My Life

RGB

20W Pro RGB



Pro Rendition



DynaVort  
Cooling System™



Bluetooth Mesh

2500K  
10000K

CCT Range

## RUNTIME

**40min**

20W Continuous Output

**1H 20min**

10W Continuous Output

**3H**

5W Continuous Output



## ZHIYUN FIVERAY M20 Modifier Pack

- ZHIYUN FIVERAY M20 4-Leaf Barn Doors
- ZHIYUN FIVERAY M20 Diffuser
- ZHIYUN FIVERAY M20 Honeycomb Grids
- ZHIYUN FIVERAY M20 Storage Bag

\*Runtime data collected from ZHIYUN laboratories under 4300K color temperature with the light fully charged.

\*The accessories above are sold separately or only included in the combo package.

\*RGB and HSI features are only available in ZHIYUN FIVERAY M20C.





## Light Setting with G/M Control

Flicker reduced and color temperature expanded. Built-in Green-Magenta control tailors your shoot's ambiance to perfection.

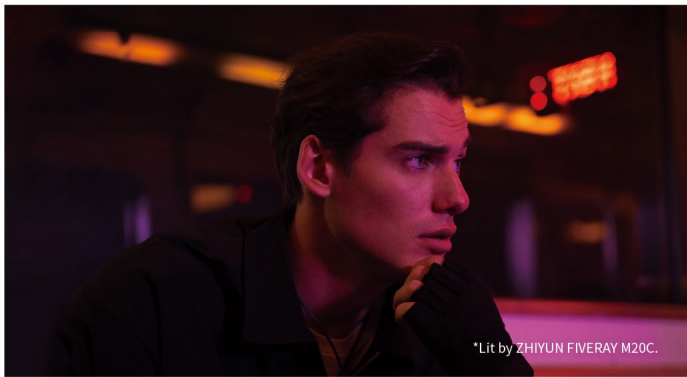
\*Green-Magenta control is only available in ZHIYUN FIVERAY M20C.



## Remote Control via App

Supports Bluetooth mesh networking for remote control and device combination joint control.

\*Wireless lighting control via App is only available in ZHIYUN FIVERAY M20C.



## 20W Glorious Spectrum

Color Temperature  
**2500K-10000K**

Peak Illuminance  
**1950Lux**

**CRI≥94 TLCI≥96**

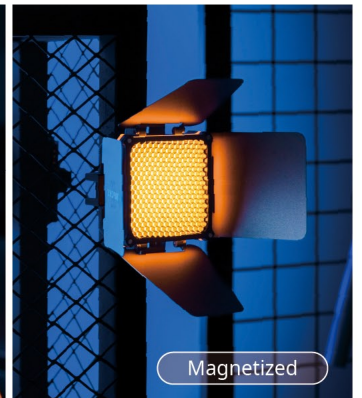
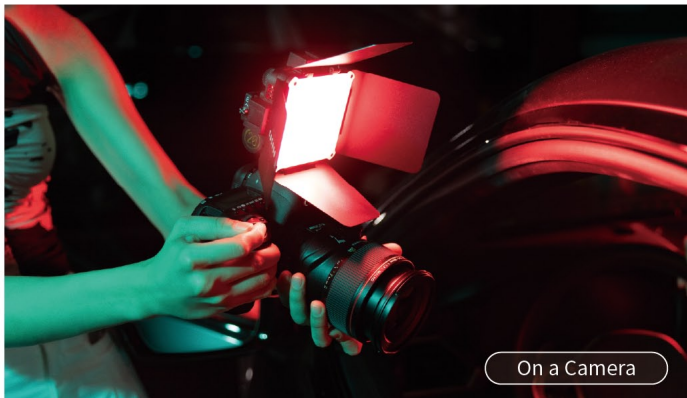


## Dual Wide Color Temperature

Color Temperature  
**2700K-6500K**

Peak Illuminance  
**2010Lux**

**CRI≥95 TLCI≥97**



## Stick to the Creativity

\*Some of the accessories are sold separately or only included in the combo package.

Using with the extension accessories, the M20 series effortlessly magnetizes to metal surfaces.

### Product Specs

Size	78*78*35.75(mm)	M20C - CRI	≥94	M20 - CRI	≥95
Output Power	20W	M20C - TLCI	≥96	M20 - TLCI	≥97
Weight	200g	M20C - Color Temperature Range	2500K-10000K	M20 - Color Temperature Range	2700K-6500K
PD Charging Time	2H (27W)	M20C - CCT Illuminance (4300K/100% BRT/0.5m)	1950Lux	M20 - CCT Illuminance (4300K/100% BRT/0.5m)	2010Lux
Continuous Runtime	40min	M20C - LED Chip	100	M20 - LED Chip	40
Battery Capacity	4500mAh	40 pcs RGB +20 pcs warm white+20 pcs cool white+20 pcs red		20 pcs warm white+20 pcs cool white	



Scan for more info

\*The peak illuminance is obtained at a 0.5-meter distance in a laboratory environment with a color temperature of 4300K and 100% brightness during testing.

\*Please refer to the actual product.  
\*Data from experiments of ZHIYUN laboratories.