

soundcore AeroFit User Guide (A3872)

APP

OVERVIEW

WEARING

CHARGING

POWERING ON & PAIRING

DUAL CONNECTIONS

TOUCH CONTROLS

POWERING OFF

RESET

LED LIGHT GUIDE

FIRMWARE UPDATE

SPECS

APP



Google Play and the Google Play logo are trademarks of Google Inc.

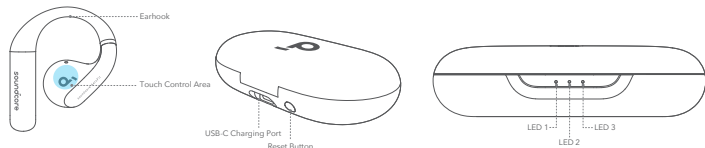


Apple and the Apple logo are trademarks of Apple Inc.

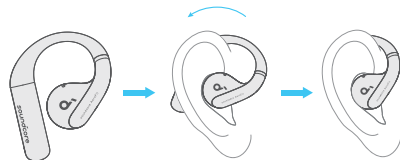


Download the soundcore app to experience 3D surround sound, adjust EQ settings, update firmware, and explore more.
If your earbuds cannot connect with the soundcore app, re-install the app or update it to the latest version in your mobile app store.

OVERVIEW



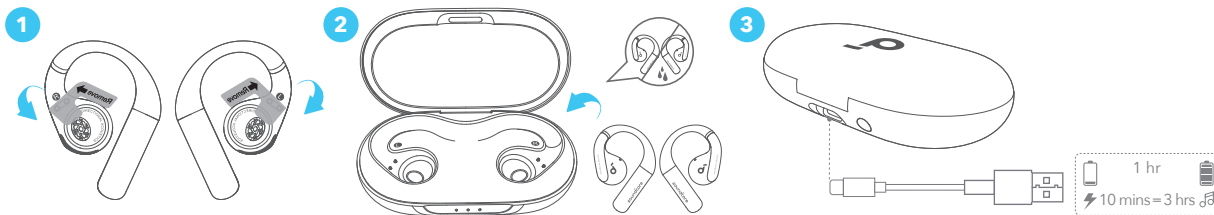
WEARING



Pick up the earbuds from the charging case, then rotate the earhooks along the auricles of your ear to achieve proper positioning.

CHARGING

Remember to remove the insulation stickers on the earbuds before first use.



1. Place the earbuds in the charging case and close it.

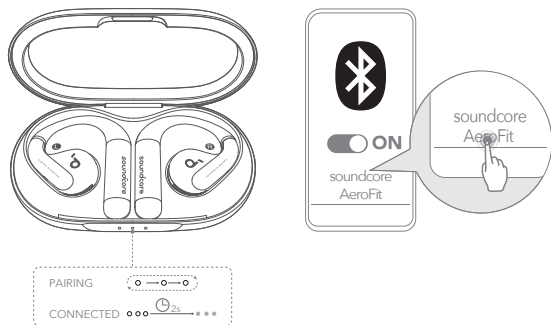
- Fully dry off the earbuds and the USB-C charging port before charging.

Low Battery Indication

Earbuds: You will hear a voice prompt of battery running low.

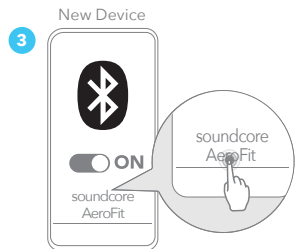
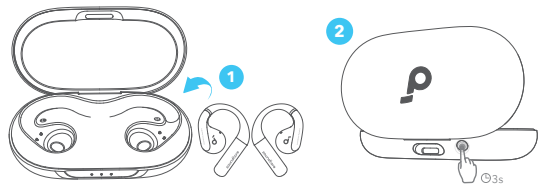
Charging case: The LED 1 indicator will light up for 3 seconds and then go off.

POWERING ON & PAIRING



After removing the insulation stickers on the earbuds, return earbuds to the charging case, then press the reset button to activate Bluetooth pairing. Also, you can pair by closing and reopening the case lid once the earbuds are back in the case. Subsequently, the earbuds will automatically power on and enter Bluetooth pairing mode when connecting for the first time. Select "**soundcore AeroFit**" on your device's Bluetooth list to connect. When pairing, the LED indicators on the charging case will start scrolling. After the pairing is successful, the LED indicators on the charging case will light up for 2 seconds and then go off.

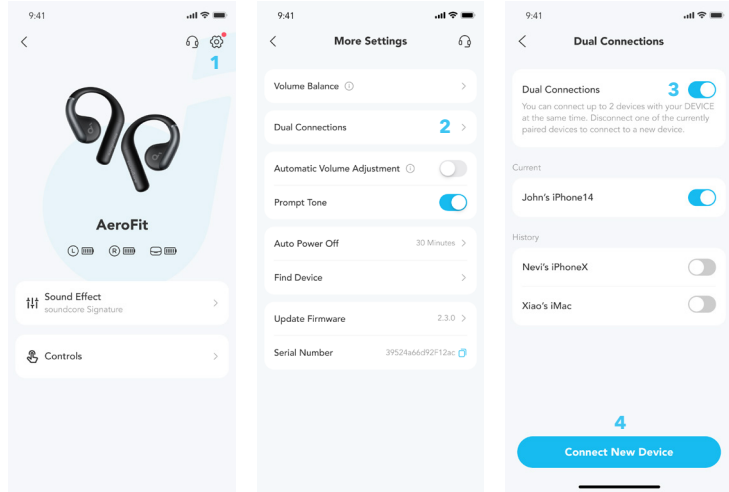
Once connected successfully, they'll automatically reconnect to your device every time you open the charging case, as long as you haven't deleted the pairing history from your device.



If you want to connect the earbuds to a new device in subsequent use, please follow the steps below:

1. Place the earbuds back into the charging case;
2. Press down the reset button and hold for 3 seconds until the LED indicators on the charging case start scrolling;
3. Select "**soundcore AeroFit**" on your new device's Bluetooth list to connect.


DUAL CONNECTIONS




To connect the earbuds with two Bluetooth devices at the same time, open the soundcore app, go to settings and select **Dual Connections > Enable Dual Connections > Connect New Device**.

*This feature is turned off by default.


TOUCH CONTROLS




TWS




R×2




L×2




Customize in App




L/R×2



L/R 2s




* Enable in App




* Enable in App


MONO




×2




Customize in App




L/R×2








L/R 2s



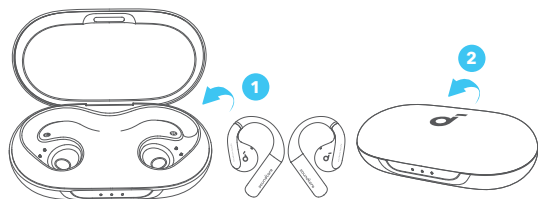
* Enable in App



* Enable in App

		TWS mode	Mono mode
	Play / Pause	Touch twice (R)	Touch twice
	Previous track	Customize in soundcore app	Customize in soundcore app
	Next track	Touch twice (L)	
	Answer /End a call	Touch twice (L/R)	Touch twice (L/R)
	Reject a call	Touch and hold for 2 seconds (L/R)	Touch and hold for 2 seconds
	Volume up	*Enable in soundcore app	*Enable in soundcore app
	Volume down	*Enable in soundcore app	
	Activate voice assistant	*Enable in soundcore app	*Enable in soundcore app

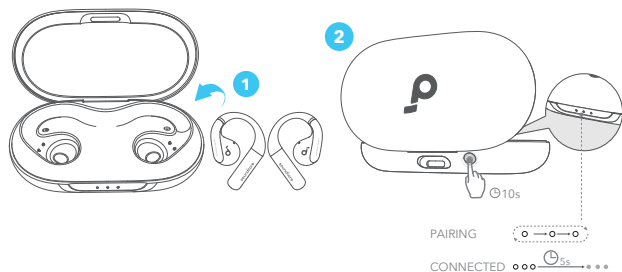
POWERING OFF



To power off, return the earbuds to the charging case and close it.

The earbuds will automatically power off after 30 minutes if they are not connected.
The duration can be customized in the soundcore app.





RESET




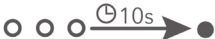


Reset if the earbuds have issues pairing with each other or with other devices.

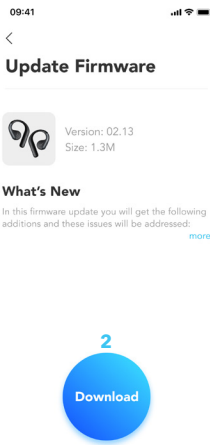
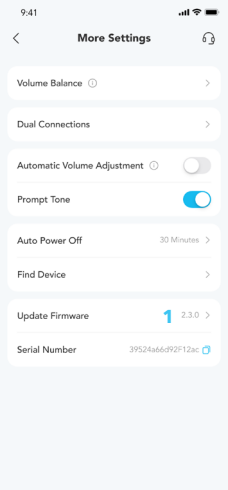
Delete the pairing history from your Bluetooth device first. Place the earbuds in the charging case and leave the case open. Press and hold the reset button on the charging case for 10 seconds until the LED indicators on the charging case start to scroll and then stay on for 5 seconds. At this time, your earbuds have been successfully reset.

LED LIGHT GUIDE

LED Status	Battery Level
LED 1-3 ON 	> 70%
LED 1-2 ON 	30% - 70%
LED 1 ON 	5% - 30%
LED 1 Flashes 	< 5% (needs charging)

LED Status	Battery Level during Charging
LED 1 Pulsing 	< 30%
LED 1 On, LED 2 Pulsing 	30% - 70%
LED 1 & LED 2 On, LED 3 Pulsing 	70% - 95%
LED 1-3 Steady White for 10s 	100%

FIRMWARE UPDATE




You will be informed once a new firmware version is detected when you connect the earbuds to the app. Ensure the earbuds are placed in the charging case and the case remains open until the firmware update is complete. During the update, ensure the earbuds are being charged and avoid any usage.

SPECS

Specifications are subject to change without notice.

Input	5V =1.2A
Output	5V = 0.5A (0.25A per port)
Battery capacity	85mAh × 2 (earbuds); 750mAh (charging case)
Charging time	1 hour (earbuds); 2 hours (charging case)
Driver unit	14mm dynamic driver
Frequency response	20Hz - 20kHz
Impedance	11Ω
Waterproof rating (earbuds)	IPX7
Bluetooth version	5.3
Bluetooth range	10m / 33ft
Maximum volume	92dB

A3872 SGS Certification Mark



Performance Tested

- ✔ Superelastic material
- ✔ Aerospace grade titanium alloy material

