

TAMRON

Focus on the Future

50-300mm F/4.5-6.3 Di III VC VXD (Model A069)

For Sony E-mount

Zoom from 50mm
Power to widen
your horizons



NEW

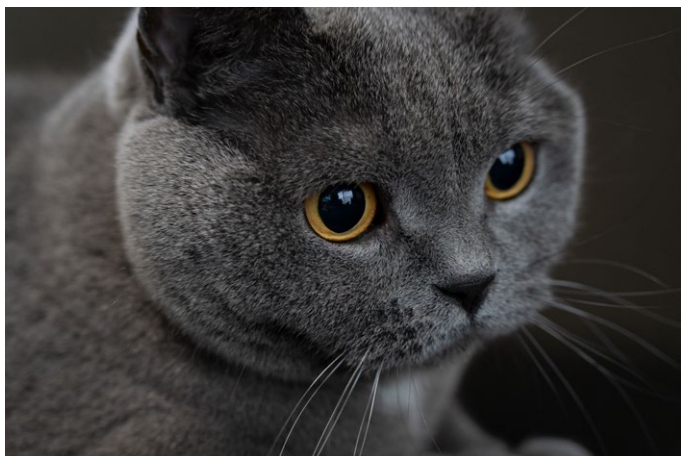
50-300_{mm} F4.5-6.3

for Sony full-frame mirrorless

(Model A069) For Sony E-mount Di III: For mirrorless interchangeable-lens cameras

Unconventional Ultra Multi telephoto zoom lens

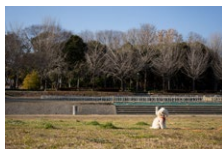
Supreme image quality,
compactness and versatility



51mm F4.5 1/60sec ISO 800 Camera: Sony α7R V

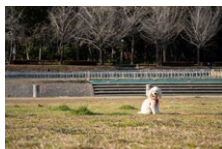
The groundbreaking 50-300mm F/4.5-6.3 Di III VC VXD (Model A069) telephoto zoom lens was created in response to feedback from users who want to “zoom out just a little more.” Starting at 50mm, it's ideal for situations where 70mm would feel somewhat tight. This compact 6x zoom lens boasts a length of just 150mm (5.9in) and a class-leading¹ light weight of 665g (23.5oz). A generous and effective arrangement of special lens elements, including two XLD² and two LD³ lens elements, provides uncompromising optical performance throughout the entire zoom range. These features let you create the images you envision and enjoy greater versatility and highly immersive shooting experiences.

Focal Length: 50mm



F4.5 1/4000sec ISO 800
Camera: Sony α1

Focal Length: 70mm



F5 1/3200sec ISO 800
Camera: Sony α1

Focal Length: 300mm

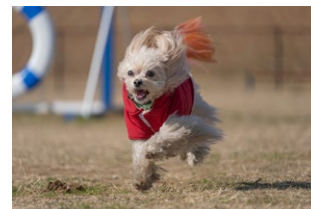


F6.3 1/3200sec ISO 800
Camera: Sony α1

High speed, high precision AF with VC mechanism for stability

The AF drive employs a VXD⁴ linear motor focus mechanism to provide accurate focusing from MOD⁵ through infinity with class-leading speed and high precision. Tracking performance for moving objects is outstanding, ensuring you can capture once-in-a-lifetime photo opportunities without missing any shots.

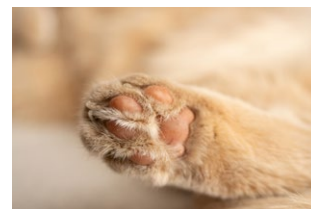
The 50-300mm F4.5-6.3 VC is equipped with TAMRON's VC⁶ mechanism to effectively suppress camera shake that tends to occur when shooting in the telephoto range, during close-focusing, or when shooting in low-light conditions.



300mm F6.3 1/5000sec ISO 800
Camera: Sony α1

Half-macro photography at 50mm

Excellent close-up performance with an MOD of 0.22m (8.7in) delivers a maximum magnification ratio of 1:2 at the 50mm wide end. Get extremely close to subjects and enjoy half-macro photography. At 300mm, the MOD is just 0.9m (35.4in), providing a magnification ratio of 1:3.1. Enjoy image compositions unique to the 50-300mm F4.5-6.3 VC and capture subjects more creatively.



50mm F4.5 1/100sec ISO 800
Camera: Sony α7R V

Compatible with TAMRON Lens Utility™ software

The 50-300mm F4.5-6.3 VC is compatible with the dedicated TAMRON Lens Utility software developed in-house by TAMRON. It lets users change lens settings, assign camera body functions and update firmware when necessary. In addition, functions unique to the mobile version can be operated remotely without touching the lens. Users may customize functions for various still and video shooting styles, providing a more personalized and fulfilling shooting experience.



For Model A069

Additional features for greater convenience

- BBAR-G2⁷ Coating - Moisture-Resistant Construction - Fluorine Coating - Zoom Lock switch

1 Among full-frame mirrorless compatible 300mm telephoto zoom lenses equipped with a vibration compensation (As of May 2024: TAMRON) 2 eXtra Low Dispersion 3 Low Dispersion 4 Voice-coil eXtreme-torque Drive 5 Minimum Object Distance 6 Vibration Compensation 7 Broad-Band Anti-Reflection Generation 2

50-300mm F/4.5-6.3 Di III VC VXD (Model A069)

Model A069
Focal Length 50-300mm
Max. Aperture F4.5-6.3
Angle of View 46°48' - 8°15'
(diagonal) <for full-frame mirrorless format>
Optical Construction 19 elements in 14 groups

Vibration Compensation ☐ MOD 0.22m (8.7in) (WIDE) / 0.9m (35.4in) (TELE)
Max. Mag. Ratio 1:2 (WIDE) / 1:3.1 (TELE)
Filter Size ϕ 67mm
Max. Diameter ϕ 78mm

Length* 150mm / 5.9in
Weight 665g / 23.5oz
Aperture Blades** .. 9 (circular diaphragm)
Min. Aperture F22-32
Standard Accessories Flower-shaped hood, Front cap, Rear cap
Mount Sony E-mount

* Length is the distance from the front end of the lens to the lens mount face.
** The circular diaphragm stays almost perfectly circular up to two stops down from maximum aperture.
Specifications, appearance, functionality, etc. are subject to change without prior notice.
This product is developed, manufactured, and sold based on the specifications of E-mount which was disclosed by Sony Corporation under the license agreement with Sony Corporation.

Caution: Please read the instruction manual carefully before using the lens.

A069-EN-111-I-2406

TAMRON CO., LTD.

1385, Hasunuma, Minuma-ku,
Saitama-shi, Saitama 337-8556 JAPAN
Tel. +81-48-684-9339
Fax. +81-48-684-9349



Management on Quality and Environment

Tamron is certified with international standards: ISO 9001 for quality and ISO14001 for environmental management at its Head Office, domestic sales offices, China-Foshan Factory, Vietnam Factory as well as production facilities in Aomori Factory, Japan, and is fully committed to striving for continued and sustainable improvement at all levels and facets of its business operations.

<https://www.tamron.com>

Note: Information valid as of May, 2024. Information in this publication is subject to change at any time without prior notice.

